
Product Name: Ribosomal Protein L28 Rabbit Polyclonal Antibody**Catalog #: APRab17155**

For research use only.

Summary

Description	Rabbit polyclonal Antibody
Host	Rabbit
Application	WB,IHC,ICC/IF,ELISA
Reactivity	Human,Mouse,Rat
Conjugation	Unconjugated
Modification	Unmodified
Isotype	IgG
Clonality	Polyclonal
Form	Liquid
Concentration	1mg/ml
Storage	Aliquot and store at -20°C (valid for 12 months). Avoid freeze/thaw cycles.
Shipping	Ice bags
Buffer	Liquid in PBS containing 50% glycerol, 0.5% protective protein and 0.02% New type preservative N.
Purification	Affinity purification

Application

Dilution Ratio	WB 1:500-1:2000,IHC 1:100-1:300,ICC/IF 1:50-1:200,ELISA 1:10000-1:20000
Molecular Weight	20kDa

Antigen Information

Gene Name	RPL28
Alternative Names	RPL28; 60S ribosomal protein L28
Gene ID	6158.0
SwissProt ID	P46779
Immunogen	The antiserum was produced against synthesized peptide derived from human RPL28. AA range:41-90

Background

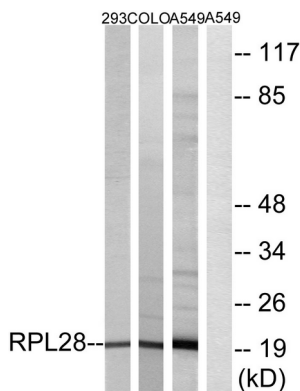
Ribosomes, the organelles that catalyze protein synthesis, consist of a small 40S subunit and a large 60S subunit. Together

these subunits are composed of 4 RNA species and approximately 80 structurally distinct proteins. This gene encodes a ribosomal protein that is a component of the 60S subunit. The protein belongs to the L28E family of ribosomal proteins. It is located in the cytoplasm. Variable expression of this gene in colorectal cancers compared to adjacent normal tissues has been observed, although no correlation between the level of expression and the severity of the disease has been found. As is typical for genes encoding ribosomal proteins, there are multiple processed pseudogenes of this gene dispersed through the genome. Alternative splicing results in multiple transcript variants encoding distinct isoforms.[provided by RefSeq, Oct 2008],similarity:Belongs to the ribosomal protein L28e family.,

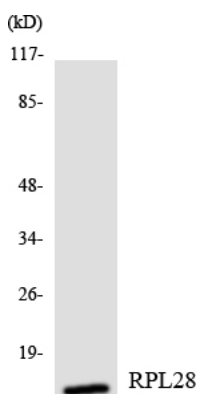
Research Area

Ribosome;

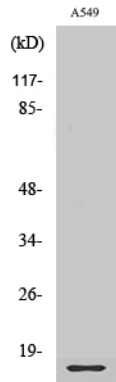
Image Data



Western blot analysis of lysates from A549, 293, and COLO cells, using RPL28 Antibody. The lane on the right is blocked with the synthesized peptide.



Western blot analysis of the lysates from HeLa cells using RPL28 antibody.



Western Blot analysis of various cells using Ribosomal Protein L28 Polyclonal Antibody diluted at 1 : 2000