
Product Name: Ribosomal Protein L26L Rabbit Polyclonal Antibody**Catalog #: APRab17153**

For research use only.

Summary

Description	Rabbit polyclonal Antibody
Host	Rabbit
Application	WB,IHC,ICC/IF,ELISA
Reactivity	Human,Mouse,Rat
Conjugation	Unconjugated
Modification	Unmodified
Isotype	IgG
Clonality	Polyclonal
Form	Liquid
Concentration	1mg/ml
Storage	Aliquot and store at -20°C (valid for 12 months). Avoid freeze/thaw cycles.
Shipping	Ice bags
Buffer	Liquid in PBS containing 50% glycerol, 0.5% protective protein and 0.02% New type preservative N.
Purification	Affinity purification

Application

Dilution Ratio	WB 1:500-1:2000,IHC 1:100-1:300,ICC/IF 1:50-1:200,ELISA 1:20000-1:40000
Molecular Weight	20kDa

Antigen Information

Gene Name	RPL26L1
Alternative Names	RPL26L1; RPL26P1; 60S ribosomal protein L26-like 1
Gene ID	51121.0
SwissProt ID	Q9UNX3
Immunogen	The antiserum was produced against synthesized peptide derived from human RPL26L. AA range:96-145

Background

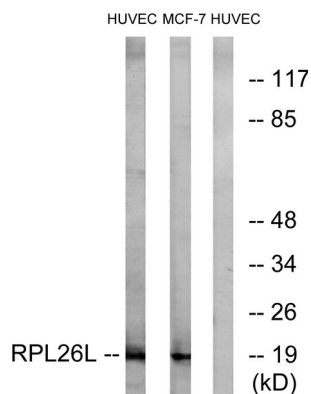
This gene encodes a protein that shares high sequence similarity with ribosomal protein L26. Alternative splicing results in

multiple transcript variants encoding the same protein. [provided by RefSeq, Dec 2015],similarity:Belongs to the ribosomal protein L24P family.,

Research Area

Ribosome;

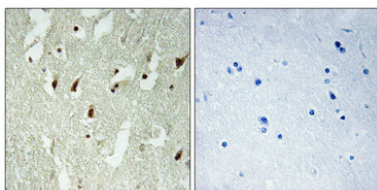
Image Data



Western blot analysis of lysates from HUVEC and MCF-7 cells, using RPL26L Antibody. The lane on the right is blocked with the synthesized peptide.



Western Blot analysis of various cells using Ribosomal Protein L26L Polyclonal Antibody diluted at 1: 2000



Immunohistochemical analysis of paraffin-embedded Human brain. Antibody was diluted at 1:100 (4°,overnight) . High-pressure and temperature Tris-EDTA,pH8.0 was used for antigen retrieval. Negative contrl (right) obtained from antibody was pre-absorbed by immunogen peptide.