

Product Name: Ribosomal Protein L12 Rabbit Polyclonal Antibody**Catalog #: APRab17146**

For research use only.

Summary

Description	Rabbit polyclonal Antibody
Host	Rabbit
Application	WB,IHC,ICC/IF,ELISA
Reactivity	Human,Mouse,Rat
Conjugation	Unconjugated
Modification	Unmodified
Isotype	IgG
Clonality	Polyclonal
Form	Liquid
Concentration	1mg/ml
Storage	Aliquot and store at -20°C (valid for 12 months). Avoid freeze/thaw cycles.
Shipping	Ice bags
Buffer	Liquid in PBS containing 50% glycerol, 0.5% protective protein and 0.02% New type preservative N.
Purification	Affinity purification

Application

Dilution Ratio	WB 1:500-1:2000,IHC 1:100-1:300,ICC/IF 1:50-1:200,ELISA 1:20000-1:40000
Molecular Weight	18kDa

Antigen Information

Gene Name	RPL12
Alternative Names	RPL12; 60S ribosomal protein L12
Gene ID	6136.0
SwissProt ID	P30050
Immunogen	The antiserum was produced against synthesized peptide derived from human RPL12. AA range:61-110

Background

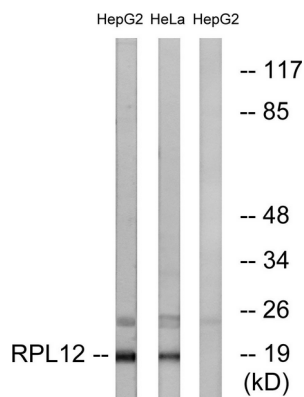
Ribosomes, the organelles that catalyze protein synthesis, consist of a small 40S subunit and a large 60S subunit. Together

these subunits are composed of 4 RNA species and approximately 80 structurally distinct proteins. This gene encodes a ribosomal protein that is a component of the 60S subunit. The protein belongs to the L11P family of ribosomal proteins. It is located in the cytoplasm. The protein binds directly to the 26S rRNA. This gene is co-transcribed with the U65 snoRNA, which is located in its fourth intron. As is typical for genes encoding ribosomal proteins, there are multiple processed pseudogenes of this gene dispersed through the genome. [provided by RefSeq, Jul 2008],function: Binds directly to 26S ribosomal RNA.,similarity: Belongs to the ribosomal protein L11P family.,

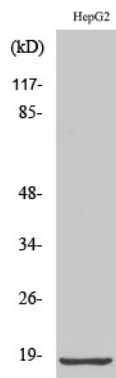
Research Area

Ribosome;

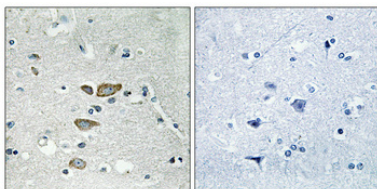
Image Data



Western blot analysis of lysates from HepG2 and HeLa cells, using RPL12 Antibody. The lane on the right is blocked with the synthesized peptide.



Western Blot analysis of various cells using Ribosomal Protein L12 Polyclonal Antibody diluted at 1: 2000



Immunohistochemical analysis of paraffin-embedded Human brain. Antibody was diluted at 1:100 (4°, overnight). High-pressure and temperature Tris-EDTA, pH 8.0 was used for antigen retrieval. Negative control (right) obtained from antibody was pre-absorbed by immunogen peptide.