

---

**Product Name: Rhotekin Rabbit Polyclonal Antibody****Catalog #: APRab17137**

For research use only.

**Summary**

<b>Description</b>	Rabbit polyclonal Antibody
<b>Host</b>	Rabbit
<b>Application</b>	IHC,ICC/IF,ELISA
<b>Reactivity</b>	Human,Mouse,Rat
<b>Conjugation</b>	Unconjugated
<b>Modification</b>	Unmodified
<b>Isotype</b>	IgG
<b>Clonality</b>	Polyclonal
<b>Form</b>	Liquid
<b>Concentration</b>	1mg/ml
<b>Storage</b>	Aliquot and store at -20°C (valid for 12 months). Avoid freeze/thaw cycles.
<b>Shipping</b>	Ice bags
<b>Buffer</b>	Liquid in PBS containing 50% glycerol, 0.5% protective protein and 0.02% New type preservative N.
<b>Purification</b>	Affinity purification

**Application**

**Dilution Ratio** IHC 1:100-1:300,ICC/IF 1:50-1:200,ELISA 1:10000-1:20000

**Molecular Weight**

**Antigen Information**

<b>Gene Name</b>	RTKN
<b>Alternative Names</b>	RTKN; RTKN1; Rhotekin
<b>Gene ID</b>	6242.0
<b>SwissProt ID</b>	Q9BST9
<b>Immunogen</b>	Synthesized peptide derived from Rhotekin . at AA range: 80-160

**Background**

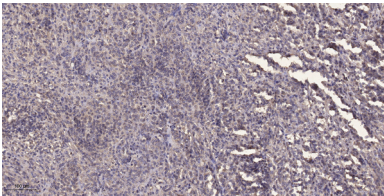
This gene encodes a scaffold protein that interacts with GTP-bound Rho proteins. Binding of this protein inhibits the GTPase activity of Rho proteins. This protein may interfere with the conversion of active, GTP-bound Rho to the inactive GDP-bound

form by RhoGAP. Rho proteins regulate many important cellular processes, including cytokinesis, transcription, smooth muscle contraction, cell growth and transformation. Dysregulation of the Rho signal transduction pathway has been implicated in many forms of cancer. Alternative splicing results in multiple transcript variants encoding different isoforms. [provided by RefSeq, Jul 2008],caution:The sequence shown here is derived from an Ensembl automatic analysis pipeline and should be considered as preliminary data.,function:Mediates Rho signaling to activate NF-kappa-B and may confer increased resistance to apoptosis to cells in gastric tumorigenesis. May play a novel role in the organization of septin structures.,similarity:Contains 1 PH domain.,similarity:Contains 1 REM (Hr1) repeat.,subunit:Interacts via its C-terminal region with the TAX1BP3 PDZ domain. This interaction facilitates Rho-mediated activation of the c-Fos serum response element (SRE). Interacts with SEPT9. Specifically binds to GTP-bound RHOA, RHOB and RHOC and inhibits their GTPase activity.,tissue specificity:Highly expressed in prostate, moderately in kidney, heart, brain, spleen, testis, placenta, small intestine, pancreas, skeletal muscle and peripheral blood leukocytes, and weakly in ovary, colon and thymus. Weakly expressed in all normal cell lines tested. Overexpressed in various cancer cell lines.,

## Research Area

Signal Transduction; Signaling Pathway; G Protein Signaling; Small G Proteins; Ras Family

## Image Data



Immunohistochemical analysis of paraffin-embedded human Colon cancer. 1, Antibody was diluted at 1:200 (4° overnight) . 2, Tris-EDTA,pH9.0 was used for antigen retrieval. 3,Secondary antibody was diluted at 1:200 (room temperature, 45min) .