
Product Name: Rhophilin Rabbit Polyclonal Antibody**Catalog #: APRab17135**

For research use only.

Summary

Description	Rabbit polyclonal Antibody
Host	Rabbit
Application	WB,IHC,ELISA
Reactivity	Human,Rat,Mouse
Conjugation	Unconjugated
Modification	Unmodified
Isotype	IgG
Clonality	Polyclonal
Form	Liquid
Concentration	1mg/ml
Storage	Aliquot and store at -20°C (valid for 12 months). Avoid freeze/thaw cycles.
Shipping	Ice bags
Buffer	Liquid in PBS containing 50% glycerol, 0.5% protective protein and 0.02% New type preservative N.
Purification	Affinity purification

Application

Dilution Ratio	WB 1:500-1:2000,IHC 1:50-1:300,ELISA 1:2000-1:20000
Molecular Weight	100kDa

Antigen Information

Gene Name	RHPN1
Alternative Names	RHPN1; KIAA1929; Rhophilin-1; GTP-Rho-binding protein 1
Gene ID	114822.0
SwissProt ID	Q8TCX5
Immunogen	The antiserum was produced against synthesized peptide derived from human RHPN1. AA range:474-523

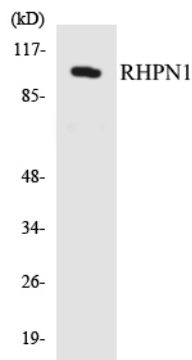
Background

domain:The PDZ domain mediates interaction with ROPN1.,function:Has no enzymatic activity. May serve as a target for Rho,

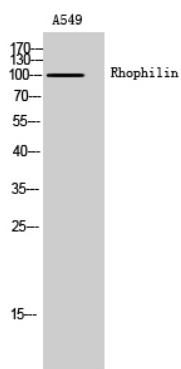
and interact with some cytoskeletal component upon Rho binding or relay a Rho signal to other molecules.,similarity:Belongs to the RHPN family.,similarity:Contains 1 BRO1 domain.,similarity:Contains 1 PDZ (DHR) domain.,similarity:Contains 1 REM (Hr1) repeat.,subunit:Binds specifically to GTP-Rho. Interacts with ROPN1.,domain:The PDZ domain mediates interaction with ROPN1.,function:Has no enzymatic activity. May serve as a target for Rho, and interact with some cytoskeletal component upon Rho binding or relay a Rho signal to other molecules.,similarity:Belongs to the RHPN family.,similarity:Contains 1 BRO1 domain.,similarity:Contains 1 PDZ (DHR) domain.,similarity:Contains 1 REM (Hr1) repeat.,subunit:Binds specifically to GTP-Rho. Interacts with ROPN1.,

Research Area

Image Data



Western blot analysis of the lysates from HepG2 cells using RHPN1 antibody.



Western Blot analysis of A549 cells using Rhophilin Polyclonal Antibody