
Product Name: RHOBTB3 Rabbit Polyclonal Antibody**Catalog #: APRab17128**

For research use only.

Summary

Description	Rabbit polyclonal Antibody
Host	Rabbit
Application	WB,IHC,ICC/IF,ELISA
Reactivity	Human,Mouse
Conjugation	Unconjugated
Modification	Unmodified
Isotype	IgG
Clonality	Polyclonal
Form	Liquid
Concentration	1mg/ml
Storage	Aliquot and store at -20°C (valid for 12 months). Avoid freeze/thaw cycles.
Shipping	Ice bags
Buffer	Liquid in PBS containing 50% glycerol, 0.5% protective protein and 0.02% New type preservative N.
Purification	Affinity purification

Application

Dilution Ratio	WB 1:500-1:2000,IHC 1:50-1:300,ICC/IF 1:50-1:200,ELISA 1:10000-1:20000
Molecular Weight	70kDa

Antigen Information

Gene Name	RHOBTB3
Alternative Names	RHOBTB3; KIAA0878; Rho-related BTB domain-containing protein 3
Gene ID	22836.0
SwissProt ID	O94955
Immunogen	The antiserum was produced against synthesized peptide derived from human RHOBTB3. AA range:335-384

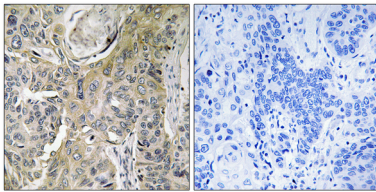
Background

RHOBTB3 is a member of the evolutionarily conserved RHOBTB subfamily of Rho GTPases. For background information on

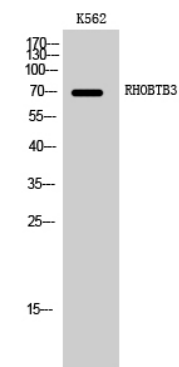
RHOBTBs, see RHOBTB1 (MIM 607351).[supplied by OMIM, Apr 2004],similarity:Contains 2 BTB (POZ) domains.,tissue specificity:Ubiquitous. Highly expressed in neural and cardiac tissues, pancreas, placenta and testis.,

Research Area

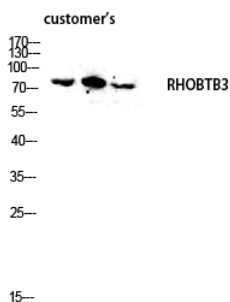
Image Data



Immunohistochemistry analysis of paraffin-embedded human lung carcinoma tissue, using RHOBTB3 Antibody. The picture on the right is blocked with the synthesized peptide.



Western Blot analysis of K562 cells using RHOBTB3 Polyclonal Antibody diluted at 1 : 2000



Western blot analysis of customer 's lysis using RHOBTB3 antibody. Antibody was diluted at 1:2000