

Product Name: Rho GDly Rabbit Polyclonal Antibody**Catalog #: APRab17125**

For research use only.

Summary

Description	Rabbit polyclonal Antibody
Host	Rabbit
Application	WB,IHC,ELISA
Reactivity	Human,Rat,Mouse
Conjugation	Unconjugated
Modification	Unmodified
Isotype	IgG
Clonality	Polyclonal
Form	Liquid
Concentration	1mg/ml
Storage	Aliquot and store at -20°C (valid for 12 months). Avoid freeze/thaw cycles.
Shipping	Ice bags
Buffer	Liquid in PBS containing 50% glycerol, 0.5% protective protein and 0.02% New type preservative N.
Purification	Affinity purification

Application

Dilution Ratio	WB 1:500-1:2000,IHC 1:50-1:300,ELISA 1:2000-1:20000
Molecular Weight	25kDa

Antigen Information

Gene Name	ARHGDIG
Alternative Names	ARHGDIG; Rho GDP-dissociation inhibitor 3; Rho GDI 3; Rho-GDI gamma
Gene ID	398.0
SwissProt ID	Q99819
Immunogen	Synthesized peptide derived from Rho GDly . at AA range: 110-190

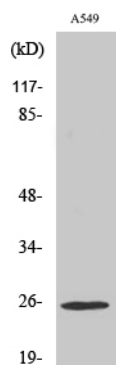
Background

The GDP-dissociation inhibitors (GDIs) play a primary role in modulating the activation of GTPases by inhibiting the exchange of GDP for GTP. See ARHGDIB (MIM 602843).[supplied by OMIM, Nov 2010],function:Inhibits GDP/GTP exchange reaction of

RhoB. Interacts specifically with the GDP- and GTP-bound forms of post-translationally processed Rhob and Rhog proteins, both of which show a growth-regulated expression in mammalian cells. Stimulates the release of the GDP-bound but not the GTP-bound RhoB protein. Also inhibits the GDP/GTP exchange of RhoB but shows less ability to inhibit the dissociation of prebound GTP.,similarity:Belongs to the Rho GDI family.,tissue specificity:Primarily expressed in pancreas and brain.,

Research Area

Image Data



Western Blot analysis of various cells using Rho GDI Polyclonal Antibody