

Product Name: Rho G Rabbit Polyclonal Antibody**Catalog #: APRab17123**

For research use only.

Summary

Description	Rabbit polyclonal Antibody
Host	Rabbit
Application	WB,IHC,ICC/IF,ELISA
Reactivity	Human,Mouse,Rat
Conjugation	Unconjugated
Modification	Unmodified
Isotype	IgG
Clonality	Polyclonal
Form	Liquid
Concentration	1mg/ml
Storage	Aliquot and store at -20°C (valid for 12 months). Avoid freeze/thaw cycles.
Shipping	Ice bags
Buffer	Liquid in PBS containing 50% glycerol, 0.5% protective protein and 0.02% New type preservative N.
Purification	Affinity purification

Application

Dilution Ratio	WB 1:500-1:2000,IHC 1:100-1:300,ICC/IF 1:50-1:200,ELISA 1:20000-1:40000
Molecular Weight	23kDa

Antigen Information

Gene Name	RHOG
Alternative Names	RHOG; ARHG; Rho-related GTP-binding protein RhoG
Gene ID	391.0
SwissProt ID	P84095
Immunogen	The antiserum was produced against synthesized peptide derived from human RHOG. AA range:97-146

Background

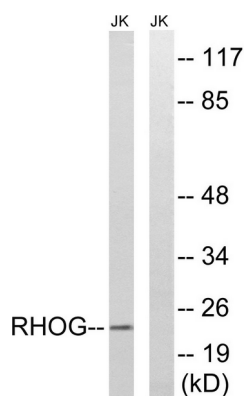
This gene encodes a member of the Rho family of small GTPases, which cycle between inactive GDP-bound and active GTP-

bound states and function as molecular switches in signal transduction cascades. Rho proteins promote reorganization of the actin cytoskeleton and regulate cell shape, attachment, and motility. The encoded protein facilitates translocation of a functional guanine nucleotide exchange factor (GEF) complex from the cytoplasm to the plasma membrane where ras-related C3 botulinum toxin substrate 1 is activated to promote lamellipodium formation and cell migration. Two related pseudogene have been identified on chromosomes 20 and X. [provided by RefSeq, Aug 2011],function:Required for the formation of membrane ruffles during macropinocytosis. Required for the formation of cup-like structures during trans-endothelial migration of leukocytes. In case of Salmonella enterica infection, activated by SopB and SGEF, which induces cytoskeleton rearrangements and promotes bacterial entry.,similarity:Belongs to the small GTPase superfamily. Rho family.,subunit:Interacts with SGEF.,

Research Area

Signal Transduction; Signaling Pathway; G Protein Signaling; Small G Proteins; Ras Family

Image Data



Western blot analysis of lysates from Jurkat cells, using RHOG Antibody. The lane on the right is blocked with the synthesized peptide.