

**Product Name: Rho D Rabbit Polyclonal Antibody****Catalog #: APRab17122**

For research use only.

**Summary**

<b>Description</b>	Rabbit polyclonal Antibody
<b>Host</b>	Rabbit
<b>Application</b>	WB,IHC,ELISA
<b>Reactivity</b>	Human,Rat,Mouse
<b>Conjugation</b>	Unconjugated
<b>Modification</b>	Unmodified
<b>Isotype</b>	IgG
<b>Clonality</b>	Polyclonal
<b>Form</b>	Liquid
<b>Concentration</b>	1mg/ml
<b>Storage</b>	Aliquot and store at -20°C (valid for 12 months). Avoid freeze/thaw cycles.
<b>Shipping</b>	Ice bags
<b>Buffer</b>	Liquid in PBS containing 50% glycerol, 0.5% protective protein and 0.02% New type preservative N.
<b>Purification</b>	Affinity purification

**Application**

<b>Dilution Ratio</b>	WB 1:500-1:2000,IHC 1:50-1:300,ELISA 1:2000-1:20000
<b>Molecular Weight</b>	25kDa

**Antigen Information**

<b>Gene Name</b>	RHOD
<b>Alternative Names</b>	RHOD; ARHD; Rho-related GTP-binding protein RhoD; Rho-related protein HP1; RhoHP1
<b>Gene ID</b>	29984.0
<b>SwissProt ID</b>	O00212
<b>Immunogen</b>	The antiserum was produced against synthesized peptide derived from human RHOD. AA range:113-162

**Background**

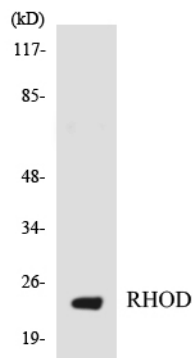
Ras homolog, or Rho, proteins interact with protein kinases and may serve as targets for activated GTPase. They play a critical

role in muscle differentiation. The protein encoded by this gene binds GTP and is a member of the small GTPase superfamily. It is involved in endosome dynamics and reorganization of the actin cytoskeleton, and it may coordinate membrane transport with the function of the cytoskeleton. Two transcript variants encoding different isoforms have been found for this gene. [provided by RefSeq, Jul 2014],function:Involved in endosome dynamics. May coordinate membrane transport with the function of the cytoskeleton. Participates in reorganization of actin cytoskeleton.,similarity:Belongs to the small GTPase superfamily. Rho family.,subunit:In the GTP-bound form, interacts with DIAPH2 isoform 3.,tissue specificity:Heart, placenta, liver, skeletal muscle, and pancreas and, with weaker intensity, in several other tissues.,

## Research Area

Axon guidance;

## Image Data



Western blot analysis of the lysates from HT-29 cells using RHOD antibody.



Western Blot analysis of various cells using Rho D Polyclonal Antibody diluted at 1:500