
Product Name: RGF1B Rabbit Polyclonal Antibody**Catalog #: APRab17074**

For research use only.

Summary

| | |
|----------------------|---|
| Description | Rabbit polyclonal Antibody |
| Host | Rabbit |
| Application | WB,ELISA |
| Reactivity | Human,Mouse |
| Conjugation | Unconjugated |
| Modification | Unmodified |
| Isotype | IgG |
| Clonality | Polyclonal |
| Form | Liquid |
| Concentration | 1mg/ml |
| Storage | Aliquot and store at -20°C (valid for 12 months). Avoid freeze/thaw cycles. |
| Shipping | Ice bags |
| Buffer | Liquid in PBS containing 50% glycerol, and 0.02% New type preservative N. |
| Purification | Affinity purification |

Application

| | |
|-------------------------|--------------------------------------|
| Dilution Ratio | WB 1:500-1:2000,ELISA 1:5000-1:20000 |
| Molecular Weight | 52kDa |

Antigen Information

| | |
|--------------------------|---|
| Gene Name | RASGEF1B GPIG4 |
| Alternative Names | |
| Gene ID | 153020.0 |
| SwissProt ID | Q0VAM2 |
| Immunogen | Synthesized peptide derived from human protein . at AA range: 410-490 |

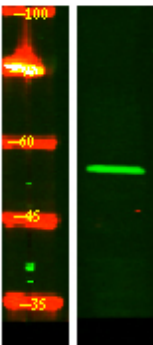
Background

function:Guanine nucleotide exchange factor (GEF) for Ras family proteins (in vitro).,induction:Up-regulated in monocytes stimulated with T.cruzi GPI-anchored mucins or bacterial lipopolysaccharide.,similarity:Contains 1 N-terminal Ras-GEF domain.,similarity:Contains 1 Ras-GEF domain.,function:Guanine nucleotide exchange factor (GEF) for Ras family proteins (in

vitro),induction:Up-regulated in monocytes stimulated with T.cruzi GPI-anchored mucins or bacterial lipopolysaccharide.,similarity:Contains 1 N-terminal Ras-GEF domain.,similarity:Contains 1 Ras-GEF domain.,

Research Area

Image Data



Western Blot analysis of HeLa lysis, using primary antibody at 1:1000 dilution. Secondary antibody was diluted at 1:10000