
Product Name: RGAG1 Rabbit Polyclonal Antibody**Catalog #: APRab17070**

For research use only.

Summary

Description	Rabbit polyclonal Antibody
Host	Rabbit
Application	WB,ELISA
Reactivity	Human,Mouse
Conjugation	Unconjugated
Modification	Unmodified
Isotype	IgG
Clonality	Polyclonal
Form	Liquid
Concentration	1mg/ml
Storage	Aliquot and store at -20°C (valid for 12 months). Avoid freeze/thaw cycles.
Shipping	Ice bags
Buffer	Liquid in PBS containing 50% glycerol, 0.5% protective protein and 0.02% New type preservative N.
Purification	Affinity purification

Application

Dilution Ratio	WB 1:500-1:2000,ELISA 1:20000-1:40000
Molecular Weight	144kDa

Antigen Information

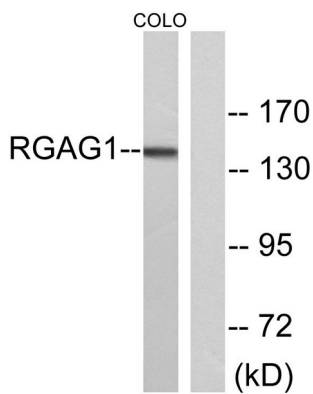
Gene Name	RGAG1
Alternative Names	RGAG1; KIAA1318; Retrotransposon gag domain-containing protein 1; Tumor antigen BJ-HCC-23
Gene ID	57529.0
SwissProt ID	Q8NET4
Immunogen	The antiserum was produced against synthesized peptide derived from human RGAG1. AA range:1331-1380

Background

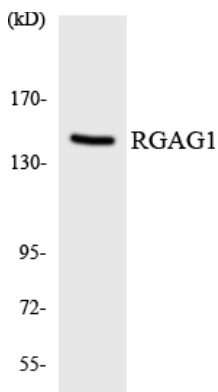
RGAG1 (Retrotransposon Gag Domain Containing 1) is a Protein Coding gene. Diseases associated with RGAG1 include non-syndromic x-linked intellectual disability.

Research Area

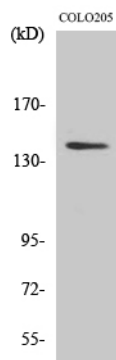
Image Data



Western blot analysis of lysates from COLO cells, using RGAG1 Antibody. The lane on the right is blocked with the synthesized peptide.



Western blot analysis of the lysates from HT-29 cells using RGAG1 antibody.



Western Blot analysis of various cells using RGAG1 Polyclonal Antibody