

**Product Name: REPS1 Rabbit Polyclonal Antibody****Catalog #: APRab17026**

For research use only.

**Summary**

|                      |   |
|----------------------|---|
| <b>Description</b>   | Rabbit polyclonal Antibody  |
| <b>Host</b>          | Rabbit  |
| <b>Application</b>   | WB,IHC,ELISA  |
| <b>Reactivity</b>    | Human,Rat,Mouse   |
| <b>Conjugation</b>   | Unconjugated  |
| <b>Modification</b>  | Unmodified  |
| <b>Isotype</b>       | IgG   |
| <b>Clonality</b>     | Polyclonal  |
| <b>Form</b>          | Liquid  |
| <b>Concentration</b> | 1mg/ml  |
| <b>Storage</b>       | Aliquot and store at -20°C (valid for 12 months). Avoid freeze/thaw cycles.                       |
| <b>Shipping</b>      | Ice bags  |
| <b>Buffer</b>        | Liquid in PBS containing 50% glycerol, 0.5% protective protein and 0.02% New type preservative N. |
| <b>Purification</b>  | Affinity purification   |

**Application**

|                         |   |
|-------------------------|---|
| <b>Dilution Ratio</b>   | WB 1:500-1:2000,IHC 1:50-1:300,ELISA 1:2000-1:20000 |
| <b>Molecular Weight</b> | 80kDa   |

**Antigen Information**

|                          |   |
|--------------------------|---|
| <b>Gene Name</b>         | REPS1   |
| <b>Alternative Names</b> | REPS1; RalBP1-associated Eps domain-containing protein 1; RalBP1-interacting protein 1            |
| <b>Gene ID</b>           | 85021.0   |
| <b>SwissProt ID</b>      | Q96D71  |
| <b>Immunogen</b>         | The antiserum was produced against synthesized peptide derived from human REPS1. AA range:597-646 |

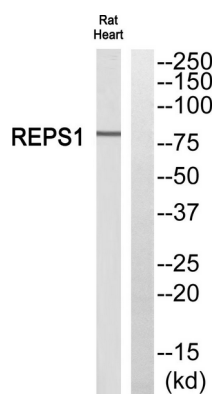
**Background**

This gene encodes a signaling adaptor protein with two EH domains that interacts with proteins that participate in signaling,

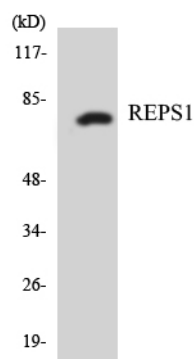
endocytosis and cytoskeletal changes. The encoded protein has been found in association with intersectin 1 and Src homology 3-domain growth factor receptor-bound 2-like (endophilin) interacting protein 1 when intersectin 1 was isolated from clathrin-coated pits. The encoded protein has also been shown to interact with amphiphysin, a cytoplasmic protein at the surface of synaptic vesicles. Alternative splicing results in multiple transcript variants encoding different isoforms. [provided by RefSeq, Mar 2014],function:May coordinate the cellular actions of activated EGF receptors and Ral-GTPases.,PTM:EGF stimulates phosphorylation on Tyr-residues.,similarity:Contains 1 EF-hand domain.,similarity:Contains 1 EH domain.,subunit:Homodimer (Potential). Interacts with RAB11FIP2. Interacts with RALBP1, CRK and GRB2. Binding to RALBP1 does not affect its Ral-binding activity. Forms a complex with the SH3 domains of CRK and GRB2 which may link it to an EGF-responsive tyrosine kinase.,

## Research Area

## Image Data



Western blot analysis of REPS1 Antibody. The lane on the right is blocked with the REPS1 peptide.



Western blot analysis of the lysates from K562 cells using REPS1 antibody.