
Product Name: Relaxin Receptor 3 Rabbit Polyclonal Antibody**Catalog #: APRab17005**

For research use only.

Summary

Description	Rabbit polyclonal Antibody
Host	Rabbit
Application	WB,IHC
Reactivity	Human,Mouse,Rat
Conjugation	Unconjugated
Modification	Unmodified
Isotype	IgG
Clonality	Polyclonal
Form	Liquid
Concentration	1mg/ml
Storage	Aliquot and store at -20°C (valid for 12 months). Avoid freeze/thaw cycles.
Shipping	Ice bags
Buffer	Liquid in PBS containing 50% glycerol, 0.5% protective protein and 0.02% New type preservative N.
Purification	Affinity purification

Application

Dilution Ratio	WB 1:500-1:2000,IHC 1:50-1:300
Molecular Weight	51kDa

Antigen Information

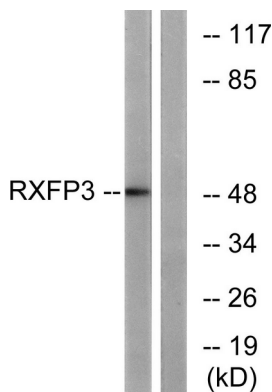
Gene Name	RXFP3 RXFP3; RLN3R1; SALPR; Relaxin-3 receptor 1; RLN3 receptor 1; G protein-coupled receptor
Alternative Names	SALPR; G-protein coupled receptor GPCR135; Relaxin family peptide receptor 3; Somatostatin- and angiotensin-like peptide receptor
Gene ID	51289.0
SwissProt ID	Q9NSD7
Immunogen	The antiserum was produced against synthesized peptide derived from human RXFP3. AA range:161-210

Background

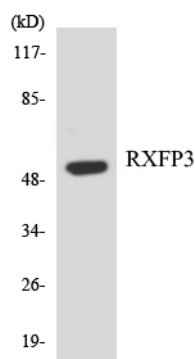
function: Receptor for relaxin-3. Binding of the ligand inhibits cAMP accumulation., similarity: Belongs to the G-protein coupled receptor 1 family., tissue specificity: Expressed predominantly in brain regions. Highest expression in substantia nigra and pituitary, followed by hippocampus, spinal cord, amygdala, caudate nucleus and corpus callosum, quite low level in cerebellum. In peripheral tissues, relatively high levels in adrenal glands, low levels in pancreas, salivary gland, placenta, mammary gland and testis., function: Receptor for relaxin-3. Binding of the ligand inhibits cAMP accumulation., similarity: Belongs to the G-protein coupled receptor 1 family., tissue specificity: Expressed predominantly in brain regions. Highest expression in substantia nigra and pituitary, followed by hippocampus, spinal cord, amygdala, caudate nucleus and corpus callosum, quite low level in cerebellum. In peripheral tissues, relatively high levels in adrenal glands, low levels in pancreas, salivary gland, placenta, mammary gland and testis.,

Research Area

Image Data



Western blot analysis of lysates from K562 cells, using RXFP3 Antibody. The lane on the right is blocked with the synthesized peptide.



Western blot analysis of the lysates from Jurkat cells using RXFP3 antibody.