
Product Name: Reg IV Rabbit Polyclonal Antibody**Catalog #: APRab16998**

For research use only.

Summary

Description	Rabbit polyclonal Antibody
Host	Rabbit
Application	IHC,ICC/IF,ELISA
Reactivity	Human,Rat,Mouse
Conjugation	Unconjugated
Modification	Unmodified
Isotype	IgG
Clonality	Polyclonal
Form	Liquid
Concentration	1mg/ml
Storage	Aliquot and store at -20°C (valid for 12 months). Avoid freeze/thaw cycles.
Shipping	Ice bags
Buffer	Liquid in PBS containing 50% glycerol, 0.5% protective protein and 0.02% New type preservative N.
Purification	Affinity purification

Application

Dilution Ratio IHC 1:100-1:300,ICC/IF 1:50-1:200,ELISA 1:20000-1:40000

Molecular Weight

Antigen Information

Gene Name	REG4
Alternative Names	REG4; GISP; RELP; Regenerating islet-derived protein 4; REG-4; Gastrointestinal secretory protein; REG-like protein; Regenerating islet-derived protein IV; Reg IV
Gene ID	83998.0
SwissProt ID	Q9BYZ8
Immunogen	Synthesized peptide derived from the Internal region of human Reg IV.

Background

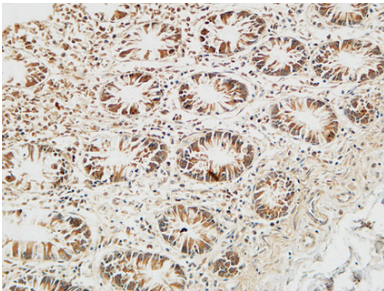
function:May be involved in inflammatory and metaplastic responses of the gastrointestinal epithelium.,induction:Up-

regulated by mucosal injury from active Crohn's disease or ulcerative colitis. Up-regulated in colorectal tumors. Up-regulated in epithelial cells at regenerating margins of peptic ulcers in the stomach and duodenum.,online information:Regenerating protein IV,similarity:Contains 1 C-type lectin domain.,tissue specificity:Highly expressed in the gastrointestinal tract including the duodenum, jejunum, ileum, ileocecum, appendix, descending colon, pancreas and small intestine. Weakly expressed in normal colon and stomach. Strongly expressed in most colorectal tumors than in normal colon. Preferentially expressed in mucinous tumors and in some cases neuro-endocrine tumors. Expressed in mucus-secreting cells and enterocyte-like cells. In small intestine expressed at the basal perinuclear zone of goblet cells.,function:May be involved in inflammatory and metaplastic responses of the gastrointestinal epithelium.,induction:Up-regulated by mucosal injury from active Crohn's disease or ulcerative colitis. Up-regulated in colorectal tumors. Up-regulated in epithelial cells at regenerating margins of peptic ulcers in the stomach and duodenum.,online information:Regenerating protein IV,similarity:Contains 1 C-type lectin domain.,tissue specificity:Highly expressed in the gastrointestinal tract including the duodenum, jejunum, ileum, ileocecum, appendix, descending colon, pancreas and small intestine. Weakly expressed in normal colon and stomach. Strongly expressed in most colorectal tumors than in normal colon. Preferentially expressed in mucinous tumors and in some cases neuro-endocrine tumors. Expressed in mucus-secreting cells and enterocyte-like cells. In small intestine expressed at the basal perinuclear zone of goblet cells.,

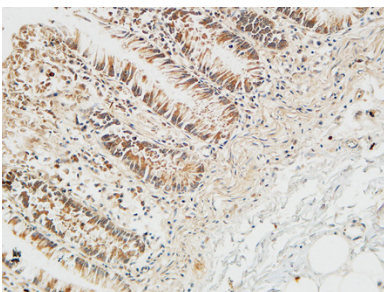
Research Area

Immunology; Secreted Molecules; Other secreted molecules; Cancer; Tumor biomarkers

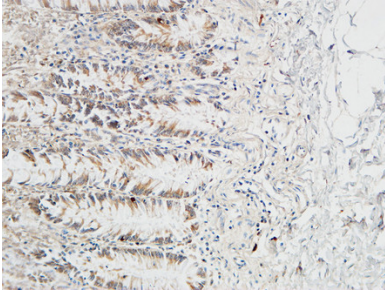
Image Data



Immunohistochemical analysis of paraffin-embedded Human colon. 1, Antibody was diluted at 1:100 (4°,overnight) . 2, High-pressure and temperature EDTA, pH8.0 was used for antigen retrieval. 3,Secondary antibody was diluted at 1:200 (room temperature, 30min) .



Immunohistochemical analysis of paraffin-embedded Human colon. 1, Antibody was diluted at 1:100 (4°,overnight) . 2, High-pressure and temperature EDTA, pH8.0 was used for antigen retrieval. 3,Secondary antibody was diluted at 1:200 (room temperature, 30min) .



Immunohistochemical analysis of paraffin-embedded Human colon. 1, Antibody was diluted at 1:100 (4°,overnight) . 2, High-pressure and temperature EDTA, pH8.0 was used for antigen retrieval. 3,Secondary antibody was diluted at 1:200 (room temperature, 30min) .