

---

**Product Name: Recoverin Rabbit Polyclonal Antibody****Catalog #: APRab16991**

For research use only.

**Summary**

<b>Description</b>	Rabbit polyclonal Antibody
<b>Host</b>	Rabbit
<b>Application</b>	WB,IHC,ICC/IF,ELISA
<b>Reactivity</b>	Human,Mouse
<b>Conjugation</b>	Unconjugated
<b>Modification</b>	Unmodified
<b>Isotype</b>	IgG
<b>Clonality</b>	Polyclonal
<b>Form</b>	Liquid
<b>Concentration</b>	1mg/ml
<b>Storage</b>	Aliquot and store at -20°C (valid for 12 months). Avoid freeze/thaw cycles.
<b>Shipping</b>	Ice bags
<b>Buffer</b>	Liquid in PBS containing 50% glycerol, 0.5% protective protein and 0.02% New type preservative N.
<b>Purification</b>	Affinity purification

**Application**

<b>Dilution Ratio</b>	WB 1:500-1:2000,IHC 1:100-1:300,ICC/IF 1:200-1:1000,ELISA 1:10000-1:20000
<b>Molecular Weight</b>	23kDa

**Antigen Information**

<b>Gene Name</b>	RCVRN
<b>Alternative Names</b>	RCVRN; RCV1; Recoverin; Cancer-associated retinopathy protein; Protein CAR
<b>Gene ID</b>	5957.0
<b>SwissProt ID</b>	P35243
<b>Immunogen</b>	The antiserum was produced against synthesized peptide derived from human Recoverin. AA range:107-156

**Background**

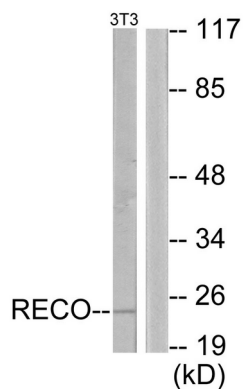
This gene encodes a member of the recoverin family of neuronal calcium sensors. The encoded protein contains three calcium-

binding EF-hand domains and may prolong the termination of the phototransduction cascade in the retina by blocking the phosphorylation of photo-activated rhodopsin. Recoverin may be the antigen responsible for cancer-associated retinopathy. [provided by RefSeq, Jul 2008],disease:Identified as the antigen in cancer-associated retinopathy, an autoimmune disease of the retina caused by a tumor in another tissue.,function:Seems to be implicated in the pathway from retinal rod guanylate cyclase to rhodopsin. May be involved in the inhibition of the phosphorylation of rhodopsin in a calcium-dependent manner. The calcium-bound recoverin prolongs the photoresponse.,miscellaneous:Binds two calcium ions; one with high affinity, the other with low affinity.,similarity:Belongs to the recoverin family.,similarity:Contains 4 EF-hand domains.,tissue specificity:Retina and pineal gland.,

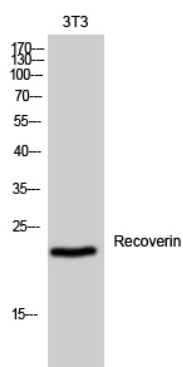
## Research Area

Signal Transduction; Signaling Pathway; Calcium Signaling; Calcium Binding Proteins; Neuroscience; Sensory System; Visual system

## Image Data



Western blot analysis of lysates from NIH/3T3 cells, using Recoverin Antibody. The lane on the right is blocked with the synthesized peptide.



Western Blot analysis of 3T3 cells using Recoverin Polyclonal Antibody