

Product Name: RBM34 Rabbit Polyclonal Antibody**Catalog #: APRab16957**

For research use only.

Summary

Description	Rabbit polyclonal Antibody
Host	Rabbit
Application	WB,IHC,ICC/IF,ELISA
Reactivity	Human,Mouse,Rat
Conjugation	Unconjugated
Modification	Unmodified
Isotype	IgG
Clonality	Polyclonal
Form	Liquid
Concentration	1mg/ml
Storage	Aliquot and store at -20°C (valid for 12 months). Avoid freeze/thaw cycles.
Shipping	Ice bags
Buffer	Liquid in PBS containing 50% glycerol, 0.5% protective protein and 0.02% New type preservative N.
Purification	Affinity purification

Application

Dilution Ratio	WB 1:500-1:2000,IHC 1:100-1:300,ICC/IF 1:50-1:200,ELISA 1:10000-1:20000
Molecular Weight	50kDa

Antigen Information

Gene Name	RBM34
Alternative Names	RBM34; KIAA0117; RNA-binding protein 34; RNA-binding motif protein 34
Gene ID	23029.0
SwissProt ID	P42696
Immunogen	The antiserum was produced against synthesized peptide derived from human RBM34. AA range:345-394

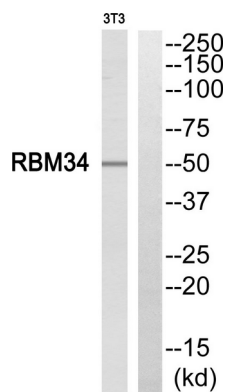
Background

PTM:Phosphorylated upon DNA damage, probably by ATM or ATR.,similarity:Belongs to the RRM RBM34

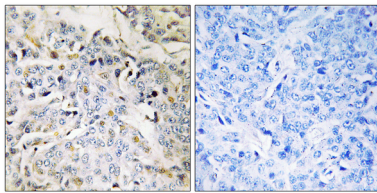
family.,similarity:Contains 2 RRM (RNA recognition motif) domains.,PTM:Phosphorylated upon DNA damage, probably by ATM or ATR.,similarity:Belongs to the RRM RBM34 family.,similarity:Contains 2 RRM (RNA recognition motif) domains.,

Research Area

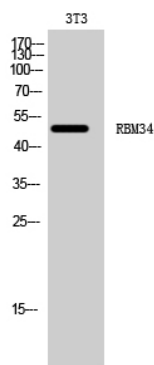
Image Data



Western blot analysis of RBM34 Antibody. The lane on the right is blocked with the RBM34 peptide.



Immunohistochemistry analysis of paraffin-embedded human breast carcinoma tissue, using RBM34 Antibody. The picture on the right is blocked with the synthesized peptide.



Western Blot analysis of 3T3 cells using RBM34 Polyclonal Antibody cells nucleus extracted by Minute TM Cytoplasmic and Nuclear Fractionation kit (SC-003, Inventbiotech, MN, USA) .