

---

**Product Name: RBAK Rabbit Polyclonal Antibody****Catalog #: APRab16942**

For research use only.

**Summary**

<b>Description</b>	Rabbit polyclonal Antibody
<b>Host</b>	Rabbit
<b>Application</b>	WB,IHC,ICC/IF,ELISA
<b>Reactivity</b>	Human,Mouse
<b>Conjugation</b>	Unconjugated
<b>Modification</b>	Unmodified
<b>Isotype</b>	IgG
<b>Clonality</b>	Polyclonal
<b>Form</b>	Liquid
<b>Concentration</b>	1mg/ml
<b>Storage</b>	Aliquot and store at -20°C (valid for 12 months). Avoid freeze/thaw cycles.
<b>Shipping</b>	Ice bags
<b>Buffer</b>	Liquid in PBS containing 50% glycerol, 0.5% protective protein and 0.02% New type preservative N.
<b>Purification</b>	Affinity purification

**Application**

<b>Dilution Ratio</b>	WB 1:500-1:2000,IHC 1:50-1:200,ICC/IF 1:50-1:200,ELISA 1:2000-1:20000
<b>Molecular Weight</b>	85kDa

**Antigen Information**

<b>Gene Name</b>	RBAK
<b>Alternative Names</b>	RBAK; ZNF769; RB-associated KRAB zinc finger protein; RB-associated KRAB repressor; hRBaK; Zinc finger protein 769
<b>Gene ID</b>	57786.0
<b>SwissProt ID</b>	Q9NYW8
<b>Immunogen</b>	The antiserum was produced against synthesized peptide derived from human RBAK. AA range:1-50

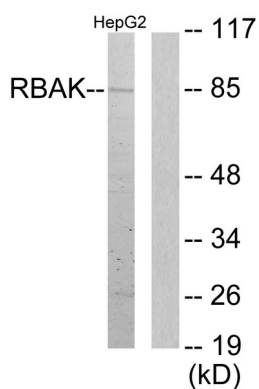
**Background**

This gene encodes a nuclear protein which interacts with the tumor suppressor retinoblastoma 1. The two interacting proteins are thought to act as a transcriptional repressor for promoters which are activated by the E2F1 transcription factor. This protein contains a Kruppel-associated box (KRAB), which is a transcriptional repressor motif. Read-through transcripts that include exons from the downstream gene LOC389458 are expressed from this locus. [provided by RefSeq, Mar 2011],function:May repress E2F-dependent transcription. May promote AR-dependent transcription.,similarity:Belongs to the krueppel C2H2-type zinc-finger protein family.,similarity:Contains 1 KRAB domain.,similarity:Contains 16 C2H2-type zinc fingers.,subunit:Interacts with AR and RB1. May also interact with other nuclear hormone receptors such as NR3C1/GR.,tissue specificity:Expressed in bone, brain, heart, kidney, liver, lung, pancreas and placenta.,

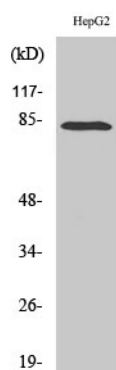
## Research Area

Epigenetics and Nuclear Signaling; Transcription; Transcription Factors

## Image Data



Western blot analysis of lysates from HepG2 cells, using RBAK Antibody. The lane on the right is blocked with the synthesized peptide.



Western Blot analysis of various cells using RBAK Polyclonal Antibody.