
Product Name: RB3 Rabbit Polyclonal Antibody**Catalog #: APRab16934**

For research use only.

Summary

Description	Rabbit polyclonal Antibody
Host	Rabbit
Application	WB,IHC,ICC/IF,ELISA
Reactivity	Human,Mouse,Rat
Conjugation	Unconjugated
Modification	Unmodified
Isotype	IgG
Clonality	Polyclonal
Form	Liquid
Concentration	1mg/ml
Storage	Aliquot and store at -20°C (valid for 12 months). Avoid freeze/thaw cycles.
Shipping	Ice bags
Buffer	Liquid in PBS containing 50% glycerol, 0.5% protective protein and 0.02% New type preservative N.
Purification	Affinity purification

Application

Dilution Ratio	WB 1:500-1:2000,IHC 1:100-1:300,ICC/IF 1:50-1:200,ELISA 1:20000-1:40000
Molecular Weight	22kDa

Antigen Information

Gene Name	STMN4
Alternative Names	STMN4; Stathmin-4; Stathmin-like protein B3; RB3
Gene ID	81551.0
SwissProt ID	Q9H169
Immunogen	The antiserum was produced against synthesized peptide derived from human STMN4. AA range:140-189

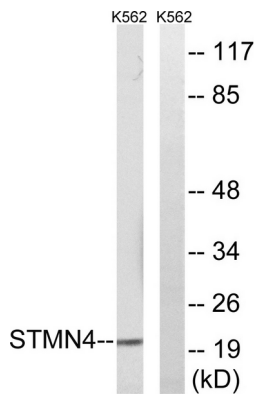
Background

similarity:Belongs to the stathmin family.,similarity:Belongs to the stathmin family.,

Research Area

Regulation of Microtubule Dynamics

Image Data



Western blot analysis of lysates from K562 cells, using STMN4 Antibody. The lane on the right is blocked with the synthesized peptide.