
Product Name: RASSF7 Rabbit Polyclonal Antibody**Catalog #: APRab16925**

For research use only.

Summary

Description	Rabbit polyclonal Antibody
Host	Rabbit
Application	IHC,ICC/IF,ELISA
Reactivity	Human,Mouse
Conjugation	Unconjugated
Modification	Unmodified
Isotype	IgG
Clonality	Polyclonal
Form	Liquid
Concentration	1mg/ml
Storage	Aliquot and store at -20°C (valid for 12 months). Avoid freeze/thaw cycles.
Shipping	Ice bags
Buffer	Liquid in PBS containing 50% glycerol, 0.5% protective protein and 0.02% New type preservative N.
Purification	Affinity purification

Application

Dilution Ratio IHC 1:100-1:300,ICC/IF 1:50-1:200,ELISA 1:5000-1:10000

Molecular Weight

Antigen Information

Gene Name	RASSF7
Alternative Names	RASSF7; C11orf13; HRC1; Ras association domain-containing protein 7; HRAS1-related cluster protein 1
Gene ID	8045.0
SwissProt ID	Q02833
Immunogen	The antiserum was produced against synthesized peptide derived from human RASSF7. AA range:159-208

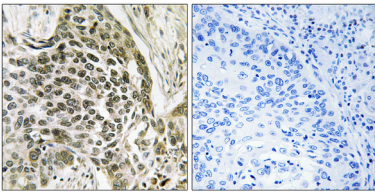
Background

similarity:Contains 1 Ras-associating domain.,similarity:Contains 1 Ras-associating domain.,

Research Area

Cell Biology; Cell Cycle; Cell Division; Spindle; Tags & Cell Markers; Subcellular Markers; Organelles; Centrosome; Epigenetics and Nuclear Signaling; Chromosome Structure; Chromatin assembly

Image Data



Immunohistochemistry analysis of paraffin-embedded human lung carcinoma tissue, using RASSF7 Antibody. The picture on the right is blocked with the synthesized peptide.