

Product Name: RASSF2 Rabbit Polyclonal Antibody
Catalog #: APRab16922



Summary

Production Name	RASSF2 Rabbit Polyclonal Antibody
Description	Rabbit Polyclonal Antibody
Host	Rabbit
Application	WB,IHC-P
Reactivity	Human,Mouse,Rat

Performance

Conjugation	Unconjugated
Modification	Unmodified
Isotype	IgG
Clonality	Polyclonal
Form	Liquid
Storage	Store at 4°C short term. Aliquot and store at -20°C long term. Avoid freeze/thaw cycles.
Buffer	Liquid in PBS containing 50% glycerol, 0.5% protective protein and 0.02% New type preservative N.
Purification	Affinity purification

Immunogen

Gene Name	RASSF2
Alternative Names	RASSF2; KIAA0168; Ras association domain-containing protein 2
Gene ID	9770.0
SwissProt ID	P50749.The antiserum was produced against synthesized peptide derived from human RASSF2. AA range:109-158

Application

Dilution Ratio	WB 1:500-2000, IHC-P 1:50-300
Molecular Weight	36kDa

Product Name: RASSF2 Rabbit Polyclonal Antibody
Catalog #: AP Rab16922



Background

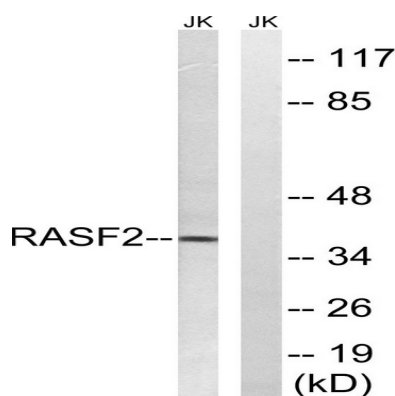
This gene encodes a protein that contains a Ras association domain. Similar to its cattle and sheep counterparts, this gene is located near the prion gene. Two alternatively spliced transcripts encoding the same isoform have been reported.

[provided by RefSeq, Jul 2008],function:Potential tumor suppressor. Acts as a KRAS-specific effector protein. May promote apoptosis and cell cycle arrest.,similarity:Contains 1 Ras-associating domain.,similarity:Contains 1 SARAH

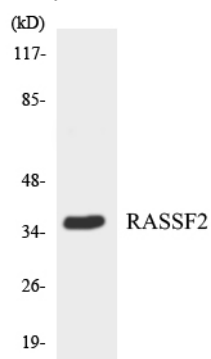
domain.,subunit:Interacts directly with activated KRAS in a GTP-dependent manner.,tissue specificity:Widely expressed with highest levels in brain, placenta, peripheral blood and lung. Frequently down-regulated in lung tumor cell lines.,

Research Area

Image Data



Western blot analysis of lysates from Jurkat cells, using RASSF2 Antibody. The lane on the right is blocked with the synthesized peptide.



Western blot analysis of the lysates from HepG2 cells using RASSF2 antibody.

Note

For research use only.