

Product Name: RASL10B Rabbit Polyclonal Antibody**Catalog #: AP Rab16916**

For research use only.

Summary

Description	Rabbit polyclonal Antibody
Host	Rabbit
Application	WB,IHC
Reactivity	Human,Mouse
Conjugation	Unconjugated
Modification	Unmodified
Isotype	IgG
Clonality	Polyclonal
Form	Liquid
Concentration	1mg/ml
Storage	Aliquot and store at -20°C (valid for 12 months). Avoid freeze/thaw cycles.
Shipping	Ice bags
Buffer	Liquid in PBS containing 50% glycerol, 0.5% protective protein and 0.02% New type preservative N.
Purification	Affinity purification

Application

Dilution Ratio	WB 1:500-1:2000,IHC 1:50-1:300
Molecular Weight	22kDa

Antigen Information

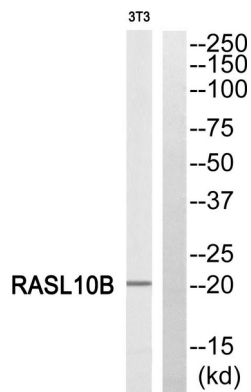
Gene Name	RASL10B
Alternative Names	RASL10B; Ras-like protein family member 10B; Ras-like protein VTS58635; Ras-related protein 17; RRP17
Gene ID	91608.0
SwissProt ID	Q96S79
Immunogen	Synthesized peptide derived from RASL10B . at AA range: 80-160

Background

similarity:Belongs to the small GTPase superfamily. Ras family.,similarity:Belongs to the small GTPase superfamily. Ras family.,

Research Area

Image Data



Western blot analysis of RASL10B Antibody. The lane on the right is blocked with the RASL10B peptide.