
Product Name: Rap 2C Rabbit Polyclonal Antibody**Catalog #: APRab16890**

For research use only.

Summary

Description	Rabbit polyclonal Antibody
Host	Rabbit
Application	WB,IHC
Reactivity	Human,Mouse
Conjugation	Unconjugated
Modification	Unmodified
Isotype	IgG
Clonality	Polyclonal
Form	Liquid
Concentration	1mg/ml
Storage	Aliquot and store at -20°C (valid for 12 months). Avoid freeze/thaw cycles.
Shipping	Ice bags
Buffer	Liquid in PBS containing 50% glycerol, 0.5% protective protein and 0.02% New type preservative N.
Purification	Affinity purification

Application

Dilution Ratio	WB 1:500-1:2000,IHC 1:50-1:300
Molecular Weight	26kDa

Antigen Information

Gene Name	RAP2C
Alternative Names	RAP2C; Ras-related protein Rap-2c
Gene ID	57826.0
SwissProt ID	Q9Y3L5
Immunogen	The antiserum was produced against synthesized peptide derived from human RAP2C. AA range:97-146

Background

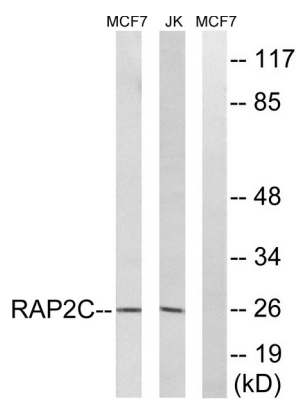
The protein encoded by this gene is a member of the Ras-related protein subfamily of the Ras GTPase superfamily. Members of

this family are small GTPases that act as molecular switches to regulate cellular proliferation, differentiation, and apoptosis. This protein has been reported to activate in vitro transcriptional activity of the serum response element. Alternative splicing results in multiple transcript variants. [provided by RefSeq, Sep 2012],similarity:Belongs to the small GTPase superfamily. Ras family.,tissue specificity:Expressed in mononuclear leukocytes and megakaryocytes. Not detected in platelets.,

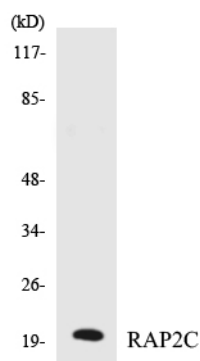
Research Area

Signal Transduction; Signaling Pathway; G Protein Signaling; Small G Proteins; Ras Family

Image Data



Western blot analysis of lysates from Jurkat and MCF-7 cells, using RAP2C Antibody. The lane on the right is blocked with the synthesized peptide.



Western blot analysis of the lysates from K562 cells using RAP2C antibody.



Western Blot analysis of various cells using Rap 2C Polyclonal Antibody diluted at 1 : 500