

Product Name: Ran BP-6 Rabbit Polyclonal Antibody**Catalog #: APRab16879**

For research use only.

Summary

Description	Rabbit polyclonal Antibody
Host	Rabbit
Application	WB,IHC,ELISA
Reactivity	Human,Mouse,Rat,Monkey
Conjugation	Unconjugated
Modification	Unmodified
Isotype	IgG
Clonality	Polyclonal
Form	Liquid
Concentration	1mg/ml
Storage	Aliquot and store at -20°C (valid for 12 months). Avoid freeze/thaw cycles.
Shipping	Ice bags
Buffer	Liquid in PBS containing 50% glycerol, 0.5% protective protein and 0.02% New type preservative N.
Purification	Affinity purification

Application

Dilution Ratio	WB 1:500-1:2000,IHC 1:50-1:300,ELISA 1:2000-1:20000
Molecular Weight	125kDa

Antigen Information

Gene Name	RANBP6
Alternative Names	RANBP6; Ran-binding protein 6; RanBP6
Gene ID	26953.0
SwissProt ID	O60518
Immunogen	The antiserum was produced against synthesized peptide derived from human RANBP6. AA range:800-849

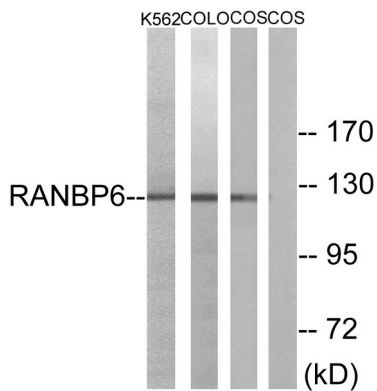
Background

function:May function in nuclear protein import as nuclear transport receptor.,similarity:Belongs to the importin beta

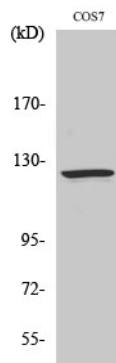
family.,similarity:Contains 7 HEAT repeats.,function:May function in nuclear protein import as nuclear transport receptor.,similarity:Belongs to the importin beta family.,similarity:Contains 7 HEAT repeats.,

Research Area

Image Data



Western blot analysis of lysates from COS7, K562, and COLO cells, using RANBP6 Antibody. The lane on the right is blocked with the synthesized peptide.



Western Blot analysis of various cells using Ran BP-6 Polyclonal Antibody