

Product Name: RAIN Rabbit Polyclonal Antibody**Catalog #: APRab16869**

For research use only.

Summary

Description	Rabbit polyclonal Antibody
Host	Rabbit
Application	WB,ELISA
Reactivity	Human,Rat,Mouse
Conjugation	Unconjugated
Modification	Unmodified
Isotype	IgG
Clonality	Polyclonal
Form	Liquid
Concentration	1mg/ml
Storage	Aliquot and store at -20°C (valid for 12 months). Avoid freeze/thaw cycles.
Shipping	Ice bags
Buffer	Liquid in PBS containing 50% glycerol, and 0.02% New type preservative N.
Purification	Affinity purification

Application

Dilution Ratio	WB 1:500-1:2000,ELISA 1:5000-1:20000
Molecular Weight	105kDa

Antigen Information

Gene Name	RASIP1
Alternative Names	
Gene ID	54922.0
SwissProt ID	Q5U651
Immunogen	Synthesized peptide derived from human protein . at AA range: 620-700

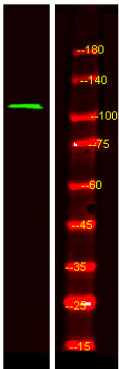
Background

function:May act as effector for Golgi-bound HRAS and other Ras-like proteins. May promote HRAS-mediated transformation.,similarity:Contains 1 dilute domain.,similarity:Contains 1 Ras-associating domain.,subcellular location:Associated with perinuclear vesicles. Is recruited to Golgi stacks by activated HRAS.,subunit:Interacts with Ras family

members that have been activated by GTP binding. Interacts with HRAS, RAP1A, RAP2, RRAS, RAF1 and RRAS2.,tissue specificity:Highly expressed in heart. Detected at lower levels in placenta and pancreas.,function:May act as effector for Golgi-bound HRAS and other Ras-like proteins. May promote HRAS-mediated transformation.,similarity:Contains 1 dilute domain.,similarity:Contains 1 Ras-associating domain.,subcellular location:Associated with perinuclear vesicles. Is recruited to Golgi stacks by activated HRAS.,subunit:Interacts with Ras family members that have been activated by GTP binding. Interacts with HRAS, RAP1A, RAP2, RRAS, RAF1 and RRAS2.,tissue specificity:Highly expressed in heart. Detected at lower levels in placenta and pancreas.,

Research Area

Image Data



Western Blot analysis of Hela lysis, using primary antibody at 1:1000 dilution. Secondary antibody was diluted at 1:10000