

Product Name: Rag B Rabbit Polyclonal Antibody**Catalog #: APRab16860**

For research use only.

Summary

Description	Rabbit polyclonal Antibody
Host	Rabbit
Application	IHC, ICC/IF, ELISA
Reactivity	Human, Mouse, Rat
Conjugation	Unconjugated
Modification	Unmodified
Isotype	IgG
Clonality	Polyclonal
Form	Liquid
Concentration	1mg/ml
Storage	Aliquot and store at -20°C (valid for 12 months). Avoid freeze/thaw cycles.
Shipping	Ice bags
Buffer	Liquid in PBS containing 50% glycerol, 0.5% protective protein and 0.02% New type preservative N.
Purification	Affinity purification

Application

Dilution Ratio IHC 1:100-1:300, ICC/IF 1:50-1:200, ELISA 1:20000-1:40000

Molecular Weight

Antigen Information

Gene Name	RRAGB
Alternative Names	RRAGB; Ras-related GTP-binding protein B; Rag B; RagB
Gene ID	10325.0
SwissProt ID	Q5VZM2
Immunogen	Synthesized peptide derived from Rag B . at AA range: 50-130

Background

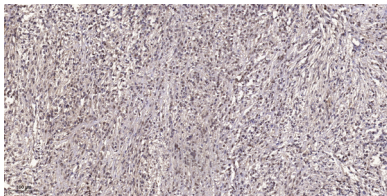
Ras-homologous GTPases constitute a large family of signal transducers that alternate between an activated, GTP-binding state and an inactivated, GDP-binding state. These proteins represent cellular switches that are operated by GTP-exchange

factors and factors that stimulate their intrinsic GTPase activity. All GTPases of the Ras superfamily have in common the presence of six conserved motifs involved in GTP/GDP binding, three of which are phosphate-/magnesium-binding sites (PM1-PM3) and three of which are guanine nucleotide-binding sites (G1-G3). Transcript variants encoding distinct isoforms have been identified. [provided by RefSeq, Jul 2008],function:Involved in the RCC1/Ran-GTPase pathway. Has guanine nucleotide-binding activity but undetectable intrinsic GTPase activity.,similarity:Belongs to the GTR/RAG GTP-binding protein family.,subunit:The short isoform binds GTP (By similarity). Interacts with RRAGC and RRAGD.,

Research Area

mTOR

Image Data



Immunohistochemical analysis of paraffin-embedded human small intestinal carcinoma tissue. 1,Rag B Rabbit Polyclonal Antibody was diluted at 1:200 (4° overnight) . 2, Sodium citrate pH 6.0 was used for antigen retrieval (>98°C,20min) . 3,Secondary antibody was diluted at 1:200.