

**Product Name: Raftlin Rabbit Polyclonal Antibody****Catalog #: APRab16858**

For research use only.

**Summary**

<b>Description</b>	Rabbit polyclonal Antibody
<b>Host</b>	Rabbit
<b>Application</b>	WB,IHC
<b>Reactivity</b>	Human,Rat,Mouse
<b>Conjugation</b>	Unconjugated
<b>Modification</b>	Unmodified
<b>Isotype</b>	IgG
<b>Clonality</b>	Polyclonal
<b>Form</b>	Liquid
<b>Concentration</b>	1mg/ml
<b>Storage</b>	Aliquot and store at -20°C (valid for 12 months). Avoid freeze/thaw cycles.
<b>Shipping</b>	Ice bags
<b>Buffer</b>	Liquid in PBS containing 50% glycerol, 0.5% protective protein and 0.02% New type preservative N.
<b>Purification</b>	Affinity purification

**Application**

<b>Dilution Ratio</b>	WB 1:500-1:2000,IHC 1:50-1:300
<b>Molecular Weight</b>	65kDa

**Antigen Information**

<b>Gene Name</b>	RFTN1
<b>Alternative Names</b>	RFTN1; KIAA0084; MIG2; Raftlin; Cell migration-inducing gene 2 protein; Raft-linking protein
<b>Gene ID</b>	23180.0
<b>SwissProt ID</b>	Q14699
<b>Immunogen</b>	The antiserum was produced against synthesized peptide derived from human RFTN1. AA range:432-481

**Background**

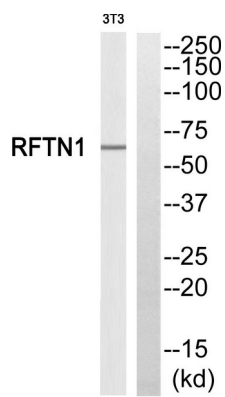
function:May play a pivotal role in the formation and/or maintenance of lipid rafts. May regulate B-cell antigen receptor-

mediated signaling.,similarity:Belongs to the raftlin family.,subcellular location:Associates with lipid rafts.,tissue specificity:Specifically expressed by B-cells (at protein level),function:May play a pivotal role in the formation and/or maintenance of lipid rafts. May regulate B-cell antigen receptor-mediated signaling.,similarity:Belongs to the raftlin family.,subcellular location:Associates with lipid rafts.,tissue specificity:Specifically expressed by B-cells (at protein level),

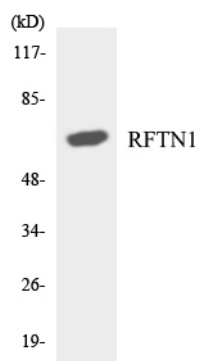
## Research Area

Tags & Cell Markers; Subcellular Markers; Plasma Membrane

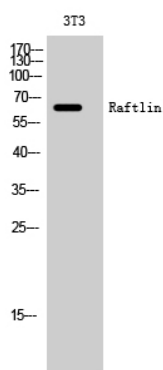
## Image Data



Western blot analysis of RFTN1 Antibody. The lane on the right is blocked with the RFTN1 peptide.



Western blot analysis of the lysates from RAW264.7 cells using RFTN1 antibody.



Western Blot analysis of 3T3 cells using Raftlin Polyclonal Antibody