
Product Name: Rad52 Rabbit Polyclonal Antibody**Catalog #: APRab16848**

For research use only.

Summary

Description	Rabbit polyclonal Antibody
Host	Rabbit
Application	WB,IHC,ICC/IF,ELISA
Reactivity	Human,Mouse
Conjugation	Unconjugated
Modification	Unmodified
Isotype	IgG
Clonality	Polyclonal
Form	Liquid
Concentration	1mg/ml
Storage	Aliquot and store at -20°C (valid for 12 months). Avoid freeze/thaw cycles.
Shipping	Ice bags
Buffer	Liquid in PBS containing 50% glycerol, 0.5% protective protein and 0.02% New type preservative N.
Purification	Affinity purification

Application

Dilution Ratio	WB 1:500-1:2000,IHC 1:100-1:300,ICC/IF 1:200-1:1000,ELISA 1:5000-1:20000
Molecular Weight	46kDa

Antigen Information

Gene Name	RAD52
Alternative Names	RAD52; DNA repair protein RAD52 homolog
Gene ID	5893.0
SwissProt ID	P43351
Immunogen	The antiserum was produced against synthesized peptide derived from human RAD52. AA range:70-119

Background

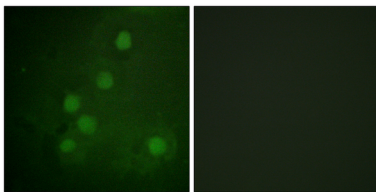
The protein encoded by this gene shares similarity with *Saccharomyces cerevisiae* Rad52, a protein important for DNA double-

strand break repair and homologous recombination. This gene product was shown to bind single-stranded DNA ends, and mediate the DNA-DNA interaction necessary for the annealing of complementary DNA strands. It was also found to interact with DNA recombination protein RAD51, which suggested its role in RAD51 related DNA recombination and repair. A pseudogene of this gene is present on chromosome 2. Alternative splicing results in multiple transcript variants. Additional alternatively spliced transcript variants of this gene have been described, but their full-length nature is not known. [provided by RefSeq, Jul 2014],function:Involved in double-stranded break repair. Plays a central role in genetic recombination and DNA repair by promoting the annealing of complementary single-stranded DNA and by stimulation of the RAD51 recombinase.,PTM:Phosphorylated upon DNA damage, probably by ATM or ATR.,similarity:Belongs to the RAD52 family.,subunit:Forms a undecameric ring,.

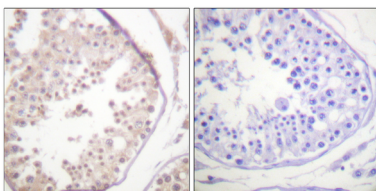
Research Area

Homologous recombination;

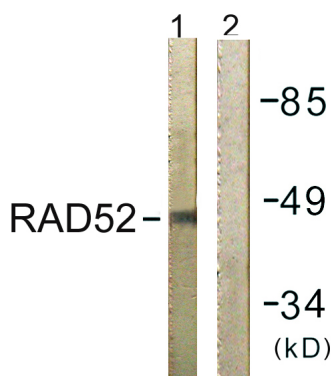
Image Data



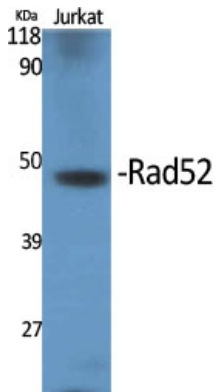
Immunofluorescence analysis of COS7 cells, using RAD52 Antibody. The picture on the right is blocked with the synthesized peptide.



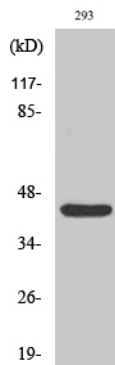
Immunohistochemistry analysis of paraffin-embedded human testis tissue, using RAD52 Antibody. The picture on the right is blocked with the synthesized peptide.



Western blot analysis of lysates from 293 cells, using RAD52 Antibody. The lane on the right is blocked with the synthesized peptide.



Western Blot analysis of various cells using Rad52 Polyclonal Antibody.



Western Blot analysis of 293 cells using Rad52 Polyclonal Antibody.