
Product Name: Rad23A Rabbit Polyclonal Antibody**Catalog #: APRab16835**

For research use only.

Summary

Description	Rabbit polyclonal Antibody
Host	Rabbit
Application	WB,IHC
Reactivity	Human,Mouse
Conjugation	Unconjugated
Modification	Unmodified
Isotype	IgG
Clonality	Polyclonal
Form	Liquid
Concentration	1mg/ml
Storage	Aliquot and store at -20°C (valid for 12 months). Avoid freeze/thaw cycles.
Shipping	Ice bags
Buffer	Liquid in PBS containing 50% glycerol, 0.5% protective protein and 0.02% New type preservative N.
Purification	Affinity purification

Application

Dilution Ratio	WB 1:500-1:2000,IHC 1:50-1:300
Molecular Weight	48kDa

Antigen Information

Gene Name	RAD23A
Alternative Names	RAD23A; UV excision repair protein RAD23 homolog A; HR23A; hHR23A
Gene ID	5886.0
SwissProt ID	P54725
Immunogen	The antiserum was produced against synthesized peptide derived from human RAD23A. AA range:91-140

Background

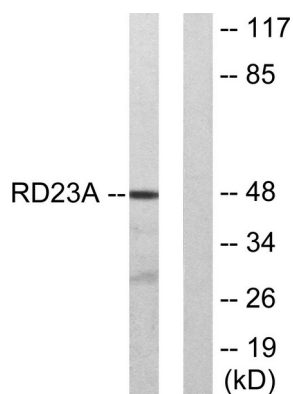
The protein encoded by this gene is one of two human homologs of *Saccharomyces cerevisiae* Rad23, a protein involved in

nucleotide excision repair. Proteins in this family have a modular domain structure consisting of an ubiquitin-like domain (Ubl), ubiquitin-associated domain 1 (Uba1), XPC-binding domain and Uba2. The protein encoded by this gene plays an important role in nucleotide excision repair and also in delivery of polyubiquitinated proteins to the proteasome. Alternative splicing results in multiple transcript variants encoding multiple isoforms. [provided by RefSeq, Jun 2012],domain:The ubiquitin-like domain mediates interaction with MJD.,function:Involved in postreplication repair of UV-damaged DNA. Postreplication repair functions in gap-filling of a daughter strand on replication of damaged DNA .,PTM:Phosphorylated upon DNA damage, probably by ATM or ATR.,similarity:Belongs to the RAD23 family.,similarity:Contains 1 ubiquitin-like domain.,similarity:Contains 2 UBA domains.,subunit:Interacts with MJD. Interacts with HIV-1 Vpr.,

Research Area

Nucleotide excision repair;

Image Data



Western blot analysis of lysates from LOVO cells, using RAD23A Antibody. The lane on the right is blocked with the synthesized peptide.