
Product Name: Rad GTPase Rabbit Polyclonal Antibody**Catalog #: APRab16828**

For research use only.

Summary

Description	Rabbit polyclonal Antibody
Host	Rabbit
Application	WB,IHC,ICC/IF,ELISA
Reactivity	Human,Rat,Mouse
Conjugation	Unconjugated
Modification	Unmodified
Isotype	IgG
Clonality	Polyclonal
Form	Liquid
Concentration	1mg/ml
Storage	Aliquot and store at -20°C (valid for 12 months). Avoid freeze/thaw cycles.
Shipping	Ice bags
Buffer	Liquid in PBS containing 50% glycerol, 0.5% protective protein and 0.02% New type preservative N.
Purification	Affinity purification

Application

Dilution Ratio	WB 1:500-1:2000,IHC 1:100-1:300,ICC/IF 1:200-1:1000,ELISA 1:10000-1:20000
Molecular Weight	33kDa

Antigen Information

Gene Name	RRAD
Alternative Names	RRAD; RAD; GTP-binding protein RAD; RAD1; Ras associated with diabetes
Gene ID	6236.0
SwissProt ID	P55042
Immunogen	The antiserum was produced against synthesized peptide derived from human RAD. AA range:41-90

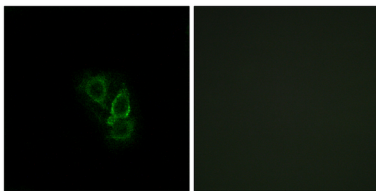
Background

similarity:Belongs to the small GTPase superfamily. RGK family.,subunit:Interacts with calmodulin preferentially to the inactive,

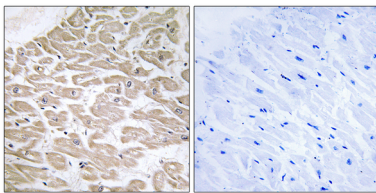
GDP-form. Binds CAMKII which is capable of phosphorylating RAD in vitro.,tissue specificity:Skeletal and cardiac muscle, and lung. Lesser amounts in placenta and kidney. Also detected in adipose tissue. Overexpressed in muscle of type II diabetic humans.,similarity:Belongs to the small GTPase superfamily. RGK family.,subunit:Interacts with calmodulin preferentially to the inactive, GDP-form. Binds CAMKII which is capable of phosphorylating RAD in vitro.,tissue specificity:Skeletal and cardiac muscle, and lung. Lesser amounts in placenta and kidney. Also detected in adipose tissue. Overexpressed in muscle of type II diabetic humans.,

Research Area

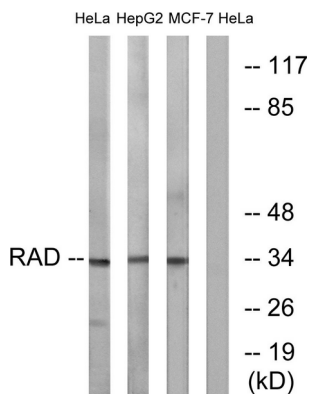
Image Data



Immunofluorescence analysis of A549 cells, using RAD Antibody. The picture on the right is blocked with the synthesized peptide.



Immunohistochemistry analysis of paraffin-embedded human heart tissue, using RAD Antibody. The picture on the right is blocked with the synthesized peptide.



Western blot analysis of lysates from HeLa and HepG2/MCF-7 cells, using RAD Antibody. The lane on the right is blocked with the synthesized peptide.



Western Blot analysis of various cells using Rad GTPase Polyclonal Antibody

