

**Product Name: Rabaptin-5 $\beta$  Rabbit Polyclonal Antibody****Catalog #: APRab16810**

For research use only.

**Summary**

<b>Description</b>	Rabbit polyclonal Antibody
<b>Host</b>	Rabbit
<b>Application</b>	WB,IHC,ICC/IF,ELISA
<b>Reactivity</b>	Human,Mouse,Rat
<b>Conjugation</b>	Unconjugated
<b>Modification</b>	Unmodified
<b>Isotype</b>	IgG
<b>Clonality</b>	Polyclonal
<b>Form</b>	Liquid
<b>Concentration</b>	1mg/ml
<b>Storage</b>	Aliquot and store at -20°C (valid for 12 months). Avoid freeze/thaw cycles.
<b>Shipping</b>	Ice bags
<b>Buffer</b>	Liquid in PBS containing 50% glycerol, 0.5% protective protein and 0.02% New type preservative N.
<b>Purification</b>	Affinity purification

**Application**

<b>Dilution Ratio</b>	WB 1:500-1:2000,IHC 1:100-1:300,ICC/IF 1:50-1:200,ELISA 1:5000-1:20000
<b>Molecular Weight</b>	64kDa

**Antigen Information**

<b>Gene Name</b>	RABEP2
<b>Alternative Names</b>	RABEP2; RABPT5B; Rab GTPase-binding effector protein 2; Rabaptin-5beta
<b>Gene ID</b>	79874.0
<b>SwissProt ID</b>	Q9H5N1
<b>Immunogen</b>	The antiserum was produced against synthesized peptide derived from human RABEP2. AA range:353-402

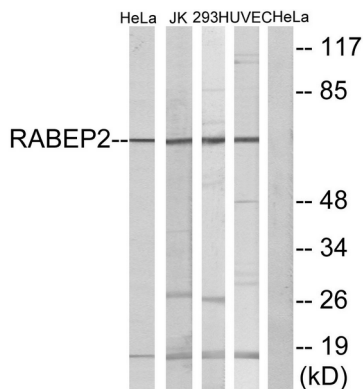
**Background**

function:Plays a role in membrane trafficking and in homotypic early endosome fusion.,similarity:Belongs to the rabaptin

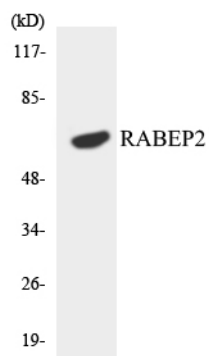
family,subunit:Heterodimer with RABGEF1. The dimer binds RAB5A that has been activated by GTP-binding.,function:Plays a role in membrane trafficking and in homotypic early endosome fusion.,similarity:Belongs to the rabaptin family,subunit:Heterodimer with RABGEF1. The dimer binds RAB5A that has been activated by GTP-binding.,

## Research Area

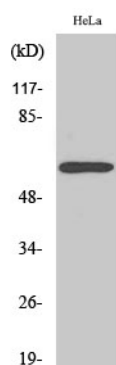
## Image Data



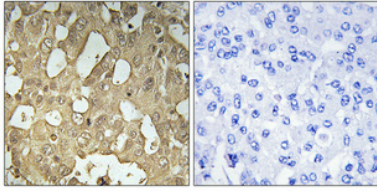
Western blot analysis of lysates from HeLa, Jurkat, 293, and HUVEC cells, using RABEP2 Antibody. The lane on the right is blocked with the synthesized peptide.



Western blot analysis of the lysates from HeLa cells using RABEP2 antibody.



Western Blot analysis of various cells using Rabaptin-5β Polyclonal Antibody



Immunohistochemical analysis of paraffin-embedded Human breast cancer. Antibody was diluted at 1:100 (4°, overnight). High-pressure and temperature Tris-EDTA, pH 8.0 was used for antigen retrieval. Negative control (right) obtained from antibody was pre-absorbed by immunogen peptide.