
Product Name: Rabaptin-5 α Rabbit Polyclonal Antibody**Catalog #: APRab16809**

For research use only.

Summary

Description	Rabbit polyclonal Antibody
Host	Rabbit
Application	IHC,ICC/IF,ELISA
Reactivity	Human,Mouse,Rat
Conjugation	Unconjugated
Modification	Unmodified
Isotype	IgG
Clonality	Polyclonal
Form	Liquid
Concentration	1mg/ml
Storage	Aliquot and store at -20°C (valid for 12 months). Avoid freeze/thaw cycles.
Shipping	Ice bags
Buffer	Liquid in PBS containing 50% glycerol, 0.5% protective protein and 0.02% New type preservative N.
Purification	Affinity purification

Application

Dilution Ratio IHC 1:100-1:300,ICC/IF 1:50-1:200,ELISA 1:20000-1:40000

Molecular Weight

Antigen Information

Gene Name	RABEP1
Alternative Names	RABEP1; RAB5EP; RABPT5; RABPT5A; Rab GTPase-binding effector protein 1; Rabaptin-4; Rabaptin-5; Rabaptin-5alpha; Renal carcinoma antigen NY-REN-17
Gene ID	9135.0
SwissProt ID	Q15276
Immunogen	The antiserum was produced against synthesized peptide derived from human RABEP1. AA range:549-598

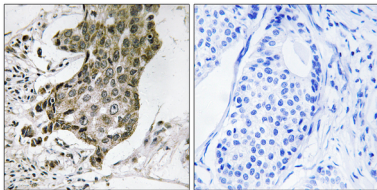
Background

function: Rab effector protein acting as linker between gamma-adaptin, RAB4A and RAB5A. Involved in endocytic membrane fusion and membrane trafficking of recycling endosomes. Stimulates RABGEF1 mediated nucleotide exchange on RAB5A.,PTM: Proteolytic cleavage by caspases in apoptotic cells causes loss of endosome fusion activity.,similarity: Belongs to the rabaptin family.,subunit: Heterodimer with RABGEF1. The heterodimer binds RAB4A and RAB5A that have been activated by GTP-binding. Binds TSC2, GGA1, GGA2, GGA3, AP1G1 and AP1G2.,function: Rab effector protein acting as linker between gamma-adaptin, RAB4A and RAB5A. Involved in endocytic membrane fusion and membrane trafficking of recycling endosomes. Stimulates RABGEF1 mediated nucleotide exchange on RAB5A.,PTM: Proteolytic cleavage by caspases in apoptotic cells causes loss of endosome fusion activity.,similarity: Belongs to the rabaptin family.,subunit: Heterodimer with RABGEF1. The heterodimer binds RAB4A and RAB5A that have been activated by GTP-binding. Binds TSC2, GGA1, GGA2, GGA3, AP1G1 and AP1G2.,

Research Area

Endocytosis;

Image Data



Immunohistochemistry analysis of paraffin-embedded human breast carcinoma tissue, using RABEP1 Antibody. The picture on the right is blocked with the synthesized peptide.