

Product Name: RAB32 Rabbit Polyclonal Antibody**Catalog #: APRab16785**

For research use only.

Summary

Description	Rabbit polyclonal Antibody
Host	Rabbit
Application	WB,ELISA
Reactivity	Human,Mouse
Conjugation	Unconjugated
Modification	Unmodified
Isotype	IgG
Clonality	Polyclonal
Form	Liquid
Concentration	1mg/ml
Storage	Aliquot and store at -20°C (valid for 12 months). Avoid freeze/thaw cycles.
Shipping	Ice bags
Buffer	Liquid in PBS containing 50% glycerol, and 0.02% New type preservative N.
Purification	Affinity purification

Application

Dilution Ratio	WB 1:500-1:2000,ELISA 1:5000-1:20000
Molecular Weight	24kDa

Antigen Information

Gene Name	RAB32
Alternative Names	
Gene ID	10981.0
SwissProt ID	Q13637
Immunogen	Synthesized peptide derived from human protein . at AA range: 160-240

Background

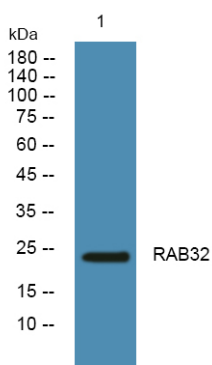
The protein encoded by this gene anchors the type II regulatory subunit of protein kinase A to the mitochondrion and aids in mitochondrial fission. The encoded protein also appears to be involved in autophagy and melanosome secretion. Variations in this gene may be linked to leprosy. [provided by RefSeq, Dec 2015],function:Acts as an A-kinase anchoring protein by binding

to the type II regulatory subunit of protein kinase A and anchoring it to the mitochondrion. Also involved in synchronization of mitochondrial fission.,similarity:Belongs to the small GTPase superfamily. Rab family.,tissue specificity:Widely expressed with high levels in heart, liver, kidney, bone marrow, testis, colon and fetal lung.,

Research Area

Protein Phosphorylation; Ser / Thr Kinases; PKA; Signal Transduction; Signaling Pathway; G Protein Signaling; Small G Proteins; Ras Family

Image Data



Western blot analysis of lysates from SH-SY5Y cells, RAB32 Rabbit Polyclonal Antibody was diluted at 1:1000, 4°over night