
Product Name: RAB28 Rabbit Polyclonal Antibody**Catalog #: APRab16783**

For research use only.

Summary

Description	Rabbit polyclonal Antibody
Host	Rabbit
Application	WB,ELISA
Reactivity	Human,Rat,Mouse
Conjugation	Unconjugated
Modification	Unmodified
Isotype	IgG
Clonality	Polyclonal
Form	Liquid
Concentration	1mg/ml
Storage	Aliquot and store at -20°C (valid for 12 months). Avoid freeze/thaw cycles.
Shipping	Ice bags
Buffer	Liquid in PBS containing 50% glycerol, and 0.02% New type preservative N.
Purification	Affinity purification

Application

Dilution Ratio	WB 1:500-1:2000,ELISA 1:5000-1:20000
Molecular Weight	24kDa

Antigen Information

Gene Name	RAB28
Alternative Names	
Gene ID	9364.0
SwissProt ID	P51157
Immunogen	Synthesized peptide derived from human protein . at AA range: 80-160

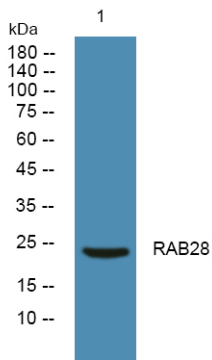
Background

This gene encodes a member of the Rab subfamily of Ras-related small GTPases. The encoded protein may be involved in regulating intracellular trafficking. Alternative splicing results in multiple transcript variants. Pseudogenes of this gene are found on chromosomes 9 and X. [provided by RefSeq, Apr 2009],similarity:Belongs to the small GTPase superfamily. Rab

family, tissue specificity: Isoform S is detected in most tissues investigated (cortex, liver, kidney, skeletal muscle, adipose tissue, testis and urothelium), whereas isoform L is predominant in testis,.

Research Area

Image Data



Western blot analysis of lysates from A431 cells, RAB28 Rabbit Polyclonal Antibody was diluted at 1:1000, 4° over night