

Product Name: RAB13 Rabbit Polyclonal Antibody**Catalog #: APRab16773**

For research use only.

Summary

Description	Rabbit polyclonal Antibody
Host	Rabbit
Application	WB,ELISA
Reactivity	Human,Rat,Mouse
Conjugation	Unconjugated
Modification	Unmodified
Isotype	IgG
Clonality	Polyclonal
Form	Liquid
Concentration	1mg/ml
Storage	Aliquot and store at -20°C (valid for 12 months). Avoid freeze/thaw cycles.
Shipping	Ice bags
Buffer	Liquid in PBS containing 50% glycerol, and 0.02% New type preservative N.
Purification	Affinity purification

Application

Dilution Ratio	WB 1:500-1:2000,ELISA 1:5000-1:20000
Molecular Weight	22kDa

Antigen Information

Gene Name	RAB13 GIG4
Alternative Names	
Gene ID	5872.0
SwissProt ID	P51153
Immunogen	Synthesized peptide derived from human protein . at AA range: 40-120

Background

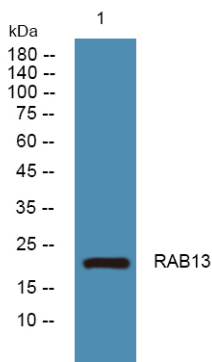
This gene is a member of the Rab family of small G proteins and plays a role in regulating membrane trafficking between trans-Golgi network (TGN) and recycling endosomes (RE). The encoded protein is involved in the assembly of tight junctions, which are components of the apical junctional complex (AJC) of epithelial cells. The AJC plays a role in forming a barrier between

luminal contents and the underlying tissue. Additional functions associated with the protein include endocytic recycling of occludin, regulation of epithelial cell scattering, neuronal regeneration and regulation of neurite outgrowth. Alternately spliced transcript variants have been observed for this gene. A pseudogene associated with this gene is located on chromosome 12. [provided by RefSeq, Jan 2013],function:Could participate in polarized transport, in the assembly and/or the activity of tight junctions.,similarity:Belongs to the small GTPase superfamily. Rab family.,subcellular location:Cytoplasmic tight junctions or associated with vesicles scattered throughout the cytoplasm in cells lacking tight junctions.,tissue specificity:Detected in several types of epithelia, including intestine, kidney, liver and in endothelial cells.,

Research Area

Tight junction;

Image Data



Western blot analysis of lysates from DU145 cells, RAB13 Rabbit Polyclonal Antibody was diluted at 1:1000, 4°over night