
Product Name: Rab11-FIP2 Rabbit Polyclonal Antibody**Catalog #: APRab16769**

For research use only.

Summary

Description	Rabbit polyclonal Antibody
Host	Rabbit
Application	WB,IHC,ELISA
Reactivity	Human,Mouse
Conjugation	Unconjugated
Modification	Unmodified
Isotype	IgG
Clonality	Polyclonal
Form	Liquid
Concentration	1mg/ml
Storage	Aliquot and store at -20°C (valid for 12 months). Avoid freeze/thaw cycles.
Shipping	Ice bags
Buffer	Liquid in PBS containing 50% glycerol, 0.5% protective protein and 0.02% New type preservative N.
Purification	Affinity purification

Application

Dilution Ratio	WB 1:500-1:2000,IHC 1:50-1:300,ELISA 1:2000-1:20000
Molecular Weight	58kDa

Antigen Information

Gene Name	RAB11FIP2
Alternative Names	RAB11FIP2; KIAA0941; Rab11 family-interacting protein 2; Rab11-FIP2; NRip11
Gene ID	22841.0
SwissProt ID	Q7L804
Immunogen	The antiserum was produced against synthesized peptide derived from human RAB11FIP2. AA range:340-389

Background

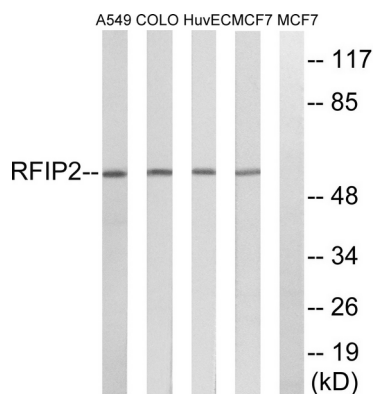
function:A Rab11 effector protein acting in the regulation of the transport of vesicles from the endosomal recycling

compartment (ERC) to the plasma membrane. Also involved in receptor-mediated endocytosis and membrane trafficking of recycling endosomes, probably originating from clathrin-coated vesicles. Binds preferentially to phosphatidylinositol 3,4,5-trisphosphate (PtdInsP3) and phosphatidic acid (PA).,similarity:Contains 1 C2 domain.,subcellular location:Translocates with RAB11A from the vesicles of the endocytic recycling compartment (ERC) to the plasma membrane.,subunit:Homooligomerizes in a Rab11-independent manner. Forms an heterooligomeric complex with RAB11FIP4. Interacts with AP2A1, MYO5B, RAB11A, RAB11B, RAB25 and REPS1. Interacts with RAB11A/RAB11B that has been activated by GTP binding.,function:A Rab11 effector protein acting in the regulation of the transport of vesicles from the endosomal recycling compartment (ERC) to the plasma membrane. Also involved in receptor-mediated endocytosis and membrane trafficking of recycling endosomes, probably originating from clathrin-coated vesicles. Binds preferentially to phosphatidylinositol 3,4,5-trisphosphate (PtdInsP3) and phosphatidic acid (PA).,similarity:Contains 1 C2 domain.,subcellular location:Translocates with RAB11A from the vesicles of the endocytic recycling compartment (ERC) to the plasma membrane.,subunit:Homooligomerizes in a Rab11-independent manner. Forms an heterooligomeric complex with RAB11FIP4. Interacts with AP2A1, MYO5B, RAB11A, RAB11B, RAB25 and REPS1. Interacts with RAB11A/RAB11B that has been activated by GTP binding.,

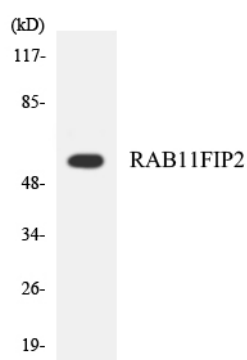
Research Area

Endocytosis;

Image Data



Western blot analysis of lysates from MCF-7, HUVEC, A549, and COLO cells, using RAB11FIP2 Antibody. The lane on the right is blocked with the synthesized peptide.



Western blot analysis of the lysates from HepG2 cells using RAB11FIP2 antibody.

Western Blot analysis of MCF-7 cells using Rab11-FIP2 Polyclonal Antibody

