

Product Name: Rab 6A Rabbit Polyclonal Antibody**Catalog #: APRab16761**

For research use only.

Summary

Description	Rabbit polyclonal Antibody
Host	Rabbit
Application	WB,IHC,ICC/IF,ELISA
Reactivity	Human,Mouse,Rat
Conjugation	Unconjugated
Modification	Unmodified
Isotype	IgG
Clonality	Polyclonal
Form	Liquid
Concentration	1mg/ml
Storage	Aliquot and store at -20°C (valid for 12 months). Avoid freeze/thaw cycles.
Shipping	Ice bags
Buffer	Liquid in PBS containing 50% glycerol, 0.5% protective protein and 0.02% New type preservative N.
Purification	Affinity purification

Application

Dilution Ratio	WB 1:500-1:2000,IHC 1:100-1:300,ICC/IF 1:50-1:200,ELISA 1:10000-1:20000
Molecular Weight	24kDa

Antigen Information

Gene Name	RAB6A
Alternative Names	RAB6A; RAB6; Ras-related protein Rab-6A; Rab-6
Gene ID	5870.0
SwissProt ID	P20340
Immunogen	The antiserum was produced against synthesized peptide derived from human RAB6A. AA range:113-162

Background

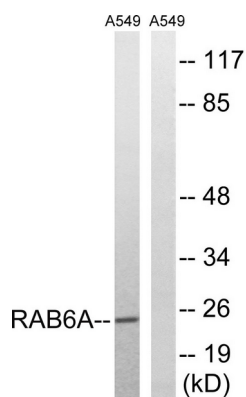
This gene encodes a member of the RAB family, which belongs to the small GTPase superfamily. GTPases of the RAB family bind

to various effectors to regulate the targeting and fusion of transport carriers to acceptor compartments. This protein is located at the Golgi apparatus, which regulates trafficking in both a retrograde (from early endosomes and Golgi to the endoplasmic reticulum) and an anterograde (from the Golgi to the plasma membrane) directions. Myosin II is an effector of this protein in these processes. This protein is also involved in assembly of human cytomegalovirus (HCMV) by interacting with the cellular protein Bicaudal D1, which interacts with the HCMV virion tegument protein, pp150. Multiple alternatively spliced transcript variants encoding different isoforms have been identified. [provided by RefSeq, Aug 2011],function:Protein transport. Regulator of membrane traffic from the Golgi apparatus towards the endoplasmic reticulum (ER). Has a low GTPase activity.,PTM:Phosphorylated upon DNA damage, probably by ATM or ATR.,similarity:Belongs to the small GTPase superfamily. Rab family.,subunit:Interacts with SCYL1BP1. Interacts with VSP52 and RABGAP1. Isoform 1 interacts with RAB6KIFL but not isoform 2. Isoforms 1 and 2 interact with BICD1 and BICD2. Interacts with TMF1.,tissue specificity:Ubiquitous.,

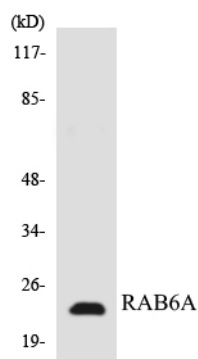
Research Area

Neuroscience; Processes

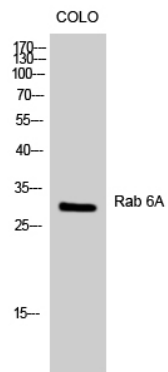
Image Data



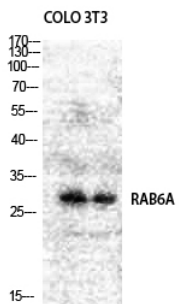
Western blot analysis of lysates from A549 cells, using RAB6A Antibody. The lane on the right is blocked with the synthesized peptide.



Western blot analysis of the lysates from HT-29 cells using RAB6A antibody.



Western Blot analysis of COLO cells using Rab 6A Polyclonal Antibody diluted at 1: 1000



Western Blot analysis of COLO NIH-3T3 cells using Rab 6A Polyclonal Antibody diluted at 1: 1000