
Product Name: Rab 5C Rabbit Polyclonal Antibody**Catalog #: APRab16760**

For research use only.

Summary

Description	Rabbit polyclonal Antibody
Host	Rabbit
Application	WB,IHC,ICC/IF,ELISA
Reactivity	Human,Mouse,Rat
Conjugation	Unconjugated
Modification	Unmodified
Isotype	IgG
Clonality	Polyclonal
Form	Liquid
Concentration	1mg/ml
Storage	Aliquot and store at -20°C (valid for 12 months). Avoid freeze/thaw cycles.
Shipping	Ice bags
Buffer	Liquid in PBS containing 50% glycerol, 0.5% protective protein and 0.02% New type preservative N.
Purification	Affinity purification

Application

Dilution Ratio	WB 1:500-1:2000,IHC 1:100-1:300,ICC/IF 1:50-1:200,ELISA 1:5000-1:10000
Molecular Weight	30kDa

Antigen Information

Gene Name	RAB5C
Alternative Names	RAB5C; RABL; Ras-related protein Rab-5C; L1880; RAB5L
Gene ID	5878.0
SwissProt ID	P51148
Immunogen	The antiserum was produced against synthesized peptide derived from human RAB5C. AA range:122-171

Background

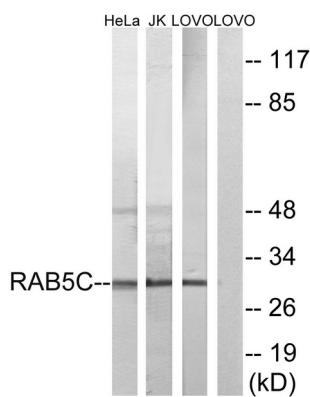
Members of the Rab protein family are small GTPases of the Ras superfamily that are thought to ensure fidelity in the process of

docking and/or fusion of vesicles with their correct acceptor compartment (Han et al., 1996 [PubMed 8646882]).[supplied by OMIM, Nov 2010],function:Protein transport. Probably involved in vesicular traffic.,similarity:Belongs to the small GTPase superfamily. Rab family.,subcellular location:Identified by mass spectrometry in melanosome fractions from stage I to stage IV.,subunit:Binds EEA1.,

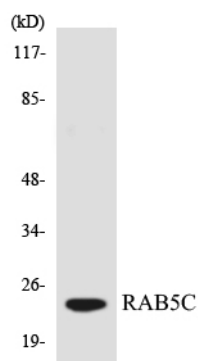
Research Area

Endocytosis;

Image Data



Western blot analysis of lysates from LOVO, HeLa, and Jurkat cells, using RAB5C Antibody. The lane on the right is blocked with the synthesized peptide.



Western blot analysis of the lysates from 293 cells using RAB5C antibody.