
Product Name: Rab 41 Rabbit Polyclonal Antibody**Catalog #: APRab16758**

For research use only.

Summary

Description	Rabbit polyclonal Antibody
Host	Rabbit
Application	IHC,ICC/IF,ELISA
Reactivity	Human,Rat,Mouse
Conjugation	Unconjugated
Modification	Unmodified
Isotype	IgG
Clonality	Polyclonal
Form	Liquid
Concentration	1mg/ml
Storage	Aliquot and store at -20°C (valid for 12 months). Avoid freeze/thaw cycles.
Shipping	Ice bags
Buffer	Liquid in PBS containing 50% glycerol, 0.5% protective protein and 0.02% New type preservative N.
Purification	Affinity purification

Application

Dilution Ratio IHC 1:100-1:300,ICC/IF 1:50-1:200,ELISA 1:10000-1:20000

Molecular Weight

Antigen Information

Gene Name	RAB41
Alternative Names	RAB41; Ras-related protein Rab-41
Gene ID	347517.0
SwissProt ID	Q5JT25
Immunogen	The antiserum was produced against synthesized peptide derived from human RAB41. AA range:115-164

Background

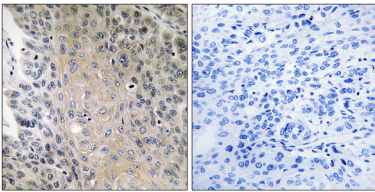
This gene encodes a small GTP-binding protein that belongs to the largest family within the Ras superfamily. These proteins

function as regulators of membrane trafficking. They cycle between inactive GDP-bound and activated GTP-bound states, which is controlled by GTP hydrolysis-activating proteins (GAPs). This family member can be activated by the GAP protein RNTre, and it is localized to the Golgi complex. [provided by RefSeq, May 2010],similarity:Belongs to the small GTPase superfamily. Rab family.,

Research Area

Signal Transduction; Signaling Pathway; G Protein Signaling; Small G Proteins; Ras Family

Image Data



Immunohistochemistry analysis of paraffin-embedded human lung carcinoma, using RAB41 Antibody. The picture on the right is blocked with the synthesized peptide.