

---

**Product Name: Rab 40B Rabbit Polyclonal Antibody****Catalog #: APRab16757**

For research use only.

**Summary**

|                      |   |
|----------------------|---|
| <b>Description</b>   | Rabbit polyclonal Antibody  |
| <b>Host</b>          | Rabbit  |
| <b>Application</b>   | WB,IHC,ICC/IF,ELISA   |
| <b>Reactivity</b>    | Human,Rat,Mouse   |
| <b>Conjugation</b>   | Unconjugated  |
| <b>Modification</b>  | Unmodified  |
| <b>Isotype</b>       | IgG   |
| <b>Clonality</b>     | Polyclonal  |
| <b>Form</b>          | Liquid  |
| <b>Concentration</b> | 1mg/ml  |
| <b>Storage</b>       | Aliquot and store at -20°C (valid for 12 months). Avoid freeze/thaw cycles.                       |
| <b>Shipping</b>      | Ice bags  |
| <b>Buffer</b>        | Liquid in PBS containing 50% glycerol, 0.5% protective protein and 0.02% New type preservative N. |
| <b>Purification</b>  | Affinity purification   |

**Application**

|                         |   |
|-------------------------|---|
| <b>Dilution Ratio</b>   | WB 1:500-1:2000,IHC 1:100-1:500,ICC/IF 1:50-1:200,ELISA 1:20000-1:40000 |
| <b>Molecular Weight</b> | 34kDa   |

**Antigen Information**

|                          |  |
|--------------------------|--|
| <b>Gene Name</b>         | RAB40B   |
| <b>Alternative Names</b> | RAB40B; SEC4L; Ras-related protein Rab-40B; SOCS box-containing protein RAR; Protein Rar           |
| <b>Gene ID</b>           | 10966.0  |
| <b>SwissProt ID</b>      | Q12829   |
| <b>Immunogen</b>         | The antiserum was produced against synthesized peptide derived from human RAB40B. AA range:229-278 |

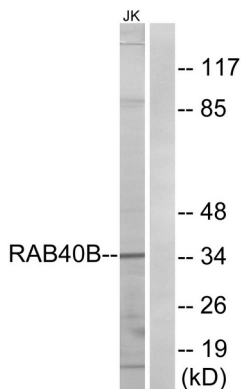
**Background**

The protein encoded by this gene has similarity to a yeast protein which suggests a role of the gene product in regulating

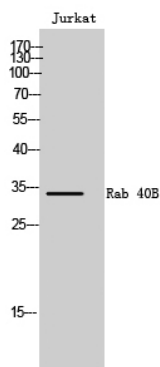
secretory vesicles. [provided by RefSeq, Jul 2008],domain:The SOCS box domain mediates the interaction with the Elongin BC complex, an adapter module in different E3 ubiquitin ligase complexes.,function:May be a substrate-recognition component of a SCF-like ECS (Elongin-Cullin-SOCS-box protein) E3 ubiquitin ligase complex which mediates the ubiquitination and subsequent proteasomal degradation of target proteins.,pathway:Protein modification; protein ubiquitination.,similarity:Belongs to the small GTPase superfamily. Rab family.,similarity:Contains 1 SOCS box domain.,

## Research Area

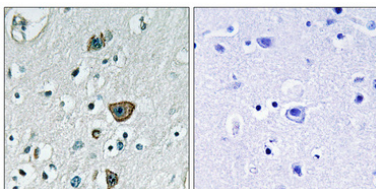
## Image Data



Western blot analysis of lysates from Jurkat cells, using RAB40B Antibody. The lane on the right is blocked with the synthesized peptide.



Western Blot analysis of Jurkat cells using Rab 40B Polyclonal Antibody



Immunohistochemical analysis of paraffin-embedded Human brain. Antibody was diluted at 1:100 (4°,overnight) . High-pressure and temperature Tris-EDTA,pH8.0 was used for antigen retrieval. Negative contrl (right) obtained from antibody was pre-absorbed by immunogen peptide.