

---

**Product Name: Rab 37 Rabbit Polyclonal Antibody****Catalog #: APRab16755**

For research use only.

**Summary**

<b>Description</b>	Rabbit polyclonal Antibody
<b>Host</b>	Rabbit
<b>Application</b>	WB,IHC,ICC/IF,ELISA
<b>Reactivity</b>	Human,Rat,Mouse
<b>Conjugation</b>	Unconjugated
<b>Modification</b>	Unmodified
<b>Isotype</b>	IgG
<b>Clonality</b>	Polyclonal
<b>Form</b>	Liquid
<b>Concentration</b>	1mg/ml
<b>Storage</b>	Aliquot and store at -20°C (valid for 12 months). Avoid freeze/thaw cycles.
<b>Shipping</b>	Ice bags
<b>Buffer</b>	Liquid in PBS containing 50% glycerol, 0.5% protective protein and 0.02% New type preservative N.
<b>Purification</b>	Affinity purification

**Application**

<b>Dilution Ratio</b>	WB 1:500-1:2000,IHC 1:100-1:300,ICC/IF 1:50-1:200,ELISA 1:5000-1:10000
<b>Molecular Weight</b>	26kDa

**Antigen Information**

<b>Gene Name</b>	RAB37
<b>Alternative Names</b>	RAB37; Ras-related protein Rab-37
<b>Gene ID</b>	326624.0
<b>SwissProt ID</b>	Q96AX2
<b>Immunogen</b>	The antiserum was produced against synthesized peptide derived from human RAB37. AA range:170-219

**Background**

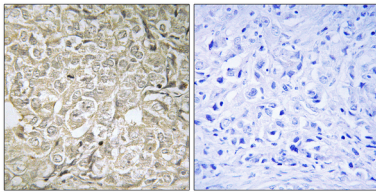
Rab proteins are low molecular mass GTPases that are critical regulators of vesicle trafficking. For additional background

information on Rab proteins, see MIM 179508.[supplied by OMIM, Apr 2006],similarity:Belongs to the small GTPase superfamily. Rab family.,subcellular location:Secretory granules.,

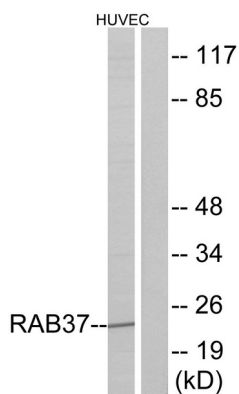
## Research Area

Signal Transduction; Signaling Pathway; G Protein Signaling; Small G Proteins; Ras Family; Immunology; Immune System Diseases; Allergens; Innate Immunity; Mast Cells

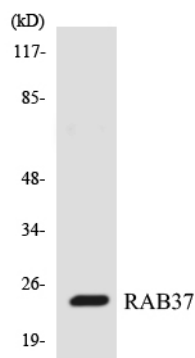
## Image Data



Immunohistochemistry analysis of paraffin-embedded human prostate carcinoma tissue, using RAB37 Antibody. The picture on the right is blocked with the synthesized peptide.



Western blot analysis of lysates from HUVEC cells, using RAB37 Antibody. The lane on the right is blocked with the synthesized peptide.



Western blot analysis of the lysates from HepG2 cells using RAB37 antibody.