
Product Name: Rab 35 Rabbit Polyclonal Antibody**Catalog #: APRab16754**

For research use only.

Summary

Description	Rabbit polyclonal Antibody
Host	Rabbit
Application	WB,IHC,ELISA
Reactivity	Human,Mouse,Rat
Conjugation	Unconjugated
Modification	Unmodified
Isotype	IgG
Clonality	Polyclonal
Form	Liquid
Concentration	1mg/ml
Storage	Aliquot and store at -20°C (valid for 12 months). Avoid freeze/thaw cycles.
Shipping	Ice bags
Buffer	Liquid in PBS containing 50% glycerol, 0.5% protective protein and 0.02% New type preservative N.
Purification	Affinity purification

Application

Dilution Ratio	WB 1:500-1:2000,IHC 1:50-1:300,ELISA 1:2000-1:20000
Molecular Weight	24kDa

Antigen Information

Gene Name	RAB35
Alternative Names	RAB35; RAB1C; RAY; Ras-related protein Rab-35; GTP-binding protein RAY; Ras-related protein Rab-1C
Gene ID	11021.0
SwissProt ID	Q15286
Immunogen	The antiserum was produced against synthesized peptide derived from human RAB35. AA range:99-148

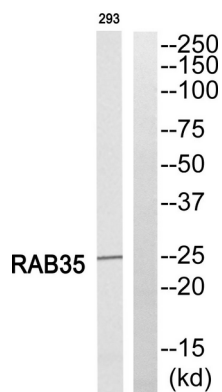
Background

function: Possesses GTPase activity., similarity: Belongs to the small GTPase superfamily. Rab family., subcellular location: Identified by mass spectrometry in melanosome fractions from stage I to stage IV., function: Possesses GTPase activity., similarity: Belongs to the small GTPase superfamily. Rab family., subcellular location: Identified by mass spectrometry in melanosome fractions from stage I to stage IV.,

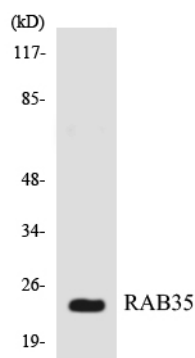
Research Area

Cell Biology; Cell Cycle; Cell Division; Cytokinesis; Signal Transduction; Signaling Pathway; G Protein Signaling; Small G Proteins; Ras Family; Protein Trafficking; Vesicle Transport; Regulation

Image Data



Western blot analysis of RAB35 Antibody. The lane on the right is blocked with the RAB35 peptide.



Western blot analysis of the lysates from HT-29 cells using RAB35 antibody.



Western Blot analysis of various cells using Rab 35 Polyclonal Antibody