

Product Name: Rab 31 Rabbit Polyclonal Antibody**Catalog #: APRab16751**

For research use only.

Summary

Description	Rabbit polyclonal Antibody
Host	Rabbit
Application	WB,IHC,ELISA
Reactivity	Human,Mouse,Rat
Conjugation	Unconjugated
Modification	Unmodified
Isotype	IgG
Clonality	Polyclonal
Form	Liquid
Concentration	1mg/ml
Storage	Aliquot and store at -20°C (valid for 12 months). Avoid freeze/thaw cycles.
Shipping	Ice bags
Buffer	Liquid in PBS containing 50% glycerol, 0.5% protective protein and 0.02% New type preservative N.
Purification	Affinity purification

Application

Dilution Ratio	WB 1:500-1:2000,IHC 1:50-1:300,ELISA 1:2000-1:20000
Molecular Weight	21kDa

Antigen Information

Gene Name	RAB31
Alternative Names	RAB31; RAB22B; Ras-related protein Rab-31; Ras-related protein Rab-22B
Gene ID	11031.0
SwissProt ID	Q13636
Immunogen	Synthesized peptide derived from Rab 31 . at AA range: 50-130

Background

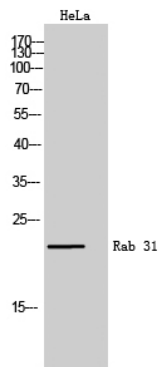
Small GTP-binding proteins of the RAB family, such as RAB31, play essential roles in vesicle and granule targeting (Bao et al., 2002 [PubMed 11784320]).[supplied by OMIM, Jul 2009],similarity:Belongs to the small GTPase superfamily. Rab family.,tissue

specificity: Highest expression in placenta and brain with lower levels in heart and lung. Not detected in liver, skeletal muscle, kidney or pancreas.,

Research Area

Endocytosis;

Image Data



Western Blot analysis of HeLa cells using Rab 31 Polyclonal Antibody