

Product Name: Rab 2A Rabbit Polyclonal Antibody**Catalog #: APRab16747**

For research use only.

Summary

Description	Rabbit polyclonal Antibody
Host	Rabbit
Application	WB,IHC,ICC/IF,ELISA
Reactivity	Human,Mouse,Rat
Conjugation	Unconjugated
Modification	Unmodified
Isotype	IgG
Clonality	Polyclonal
Form	Liquid
Concentration	1mg/ml
Storage	Aliquot and store at -20°C (valid for 12 months). Avoid freeze/thaw cycles.
Shipping	Ice bags
Buffer	Liquid in PBS containing 50% glycerol, 0.5% protective protein and 0.02% New type preservative N.
Purification	Affinity purification

Application

Dilution Ratio	WB 1:500-1:2000,IHC 1:100-1:300,ICC/IF 1:50-1:200,ELISA 1:10000-1:20000
Molecular Weight	25kDa

Antigen Information

Gene Name	RAB2A
Alternative Names	RAB2A; RAB2; Ras-related protein Rab-2A
Gene ID	5862.0
SwissProt ID	P61019
Immunogen	The antiserum was produced against synthesized peptide derived from human RAB2A. AA range:84-133

Background

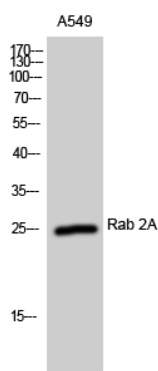
The protein encoded by this gene belongs to the Rab family, members of which are small molecular weight guanosine

triphosphatases (GTPases) that contain highly conserved domains involved in GTP binding and hydrolysis. The Rabs are membrane-bound proteins, involved in vesicular fusion and trafficking. This protein is a resident of pre-Golgi intermediates, and is required for protein transport from the endoplasmic reticulum (ER) to the Golgi complex. Alternatively spliced transcript variants encoding different isoforms have been found for this gene. [provided by RefSeq, Oct 2011],function:Required for protein transport from the endoplasmic reticulum to the Golgi complex.,similarity:Belongs to the small GTPase superfamily. Rab family.,subcellular location:Identified by mass spectrometry in melanosome fractions from stage I to stage IV.,subunit:Interacts with PRKCI.,

Research Area

Neuroscience; Neurotransmission; Receptors / Channels; GPCR; Adrenergic Receptors; Signal Transduction; Signaling Pathway; G Protein Signaling

Image Data



Western Blot analysis of A549 cells using Rab 2A Polyclonal Antibody