

---

**Product Name: Rab 1B Rabbit Polyclonal Antibody****Catalog #: APRab16743**

For research use only.

**Summary**

<b>Description</b>	Rabbit polyclonal Antibody
<b>Host</b>	Rabbit
<b>Application</b>	WB,IHC,ELISA
<b>Reactivity</b>	Human,Mouse,Rat
<b>Conjugation</b>	Unconjugated
<b>Modification</b>	Unmodified
<b>Isotype</b>	IgG
<b>Clonality</b>	Polyclonal
<b>Form</b>	Liquid
<b>Concentration</b>	1mg/ml
<b>Storage</b>	Aliquot and store at -20°C (valid for 12 months). Avoid freeze/thaw cycles.
<b>Shipping</b>	Ice bags
<b>Buffer</b>	Liquid in PBS containing 50% glycerol, 0.5% protective protein and 0.02% New type preservative N.
<b>Purification</b>	Affinity purification

**Application**

<b>Dilution Ratio</b>	WB 1:500-1:2000,IHC 1:50-1:300,ELISA 1:2000-1:20000
<b>Molecular Weight</b>	22kDa

**Antigen Information**

<b>Gene Name</b>	RAB1B
<b>Alternative Names</b>	RAB1B; Ras-related protein Rab-1B
<b>Gene ID</b>	81876.0
<b>SwissProt ID</b>	Q9H0U4
<b>Immunogen</b>	Synthesized peptide derived from Rab 1B . at AA range: 50-130

**Background**

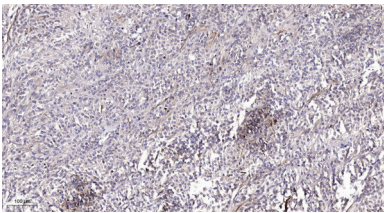
Members of the RAB protein family, such as RAB1B, are low molecular mass monomeric GTPases localized on the cytoplasmic surfaces of distinct membrane-bound organelles. RAB1B functions in the early secretory pathway and is essential for vesicle

transport between the endoplasmic reticulum (ER) and Golgi (Chen et al., 1997 [PubMed 9030196]; Alvarez et al., 2003 [PubMed 12802079]).[supplied by OMIM, Jan 2009],function:Protein transport. Regulates vesicular transport between the endoplasmic reticulum and successive Golgi compartments.,miscellaneous:Rab-1B binds GTP and GDP and possesses intrinsic GTPase activity.,PTM:Prenylated; by GGTase II, only after interaction of the substrate with Rab escort protein 1 (REP1),.similarity:Belongs to the small GTPase superfamily. Rab family.,subcellular location:Targeted by REP1 to membranes of specific subcellular compartments including endoplasmic reticulum, Golgi apparatus, and intermediate vesicles between these two compartments. In the GDP-form, colocalizes with GDI in the cytoplasm.,subunit:Interacts with MICAL1, MICAL2 and MICAL3. Interacts with GDI1; the interaction requires the GDP-bound state. Interacts with CHM/REP1; the interaction requires the GDP-bound form and is necessary for prenylation by GGTase II.,

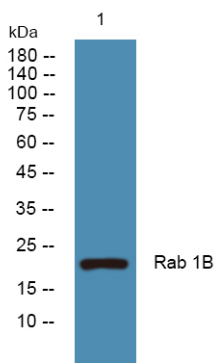
## Research Area

Signaling Pathway; G Protein Signaling; Small G Proteins; Ras Family; Signal Transduction; Protein Trafficking; Vesicle Transport; Regulation

## Image Data



Immunohistochemical analysis of paraffin-embedded human Colon cancer. 1, Antibody was diluted at 1:200 (4° overnight) . 2, Tris-EDTA,pH9.0 was used for antigen retrieval. 3,Secondary antibody was diluted at 1:200 (room temperature, 45min) .



Western blot analysis of lysates from SH-SY5Y cells, Rab 1B Rabbit Polyclonal Antibody was diluted at 1:1000, 4°over night