

Product Name: Rab 18 Rabbit Polyclonal Antibody**Catalog #: APRab16742**

For research use only.

Summary

Description	Rabbit polyclonal Antibody
Host	Rabbit
Application	WB,IHC,ELISA
Reactivity	Human,Mouse,Rat
Conjugation	Unconjugated
Modification	Unmodified
Isotype	IgG
Clonality	Polyclonal
Form	Liquid
Concentration	1mg/ml
Storage	Aliquot and store at -20°C (valid for 12 months). Avoid freeze/thaw cycles.
Shipping	Ice bags
Buffer	Liquid in PBS containing 50% glycerol, 0.5% protective protein and 0.02% New type preservative N.
Purification	Affinity purification

Application

Dilution Ratio	WB 1:500-1:2000,IHC 1:50-1:300,ELISA 1:2000-1:20000
Molecular Weight	28kDa

Antigen Information

Gene Name	RAB18
Alternative Names	RAB18; Ras-related protein Rab-18
Gene ID	22931.0
SwissProt ID	Q9NP72
Immunogen	The antiserum was produced against synthesized peptide derived from human RAB18. AA range:103-152

Background

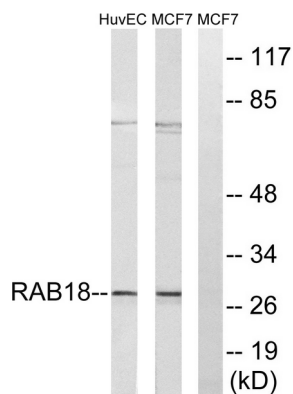
The protein encoded by this gene is a member of a family of Ras-related small GTPases that regulate membrane trafficking in

organelles and transport vesicles. Knockdown studies in zebrafish suggest that this protein may have a role in eye and brain development. Mutations in this gene are associated with Warburg micro syndrome type 3. Alternatively spliced transcript variants have been found for this gene. [provided by RefSeq, Jan 2012], function: Plays a role in apical endocytosis/recycling. May be implicated in transport between the plasma membrane and early endosomes., similarity: Belongs to the small GTPase superfamily. Rab family., tissue specificity: Ubiquitous.,

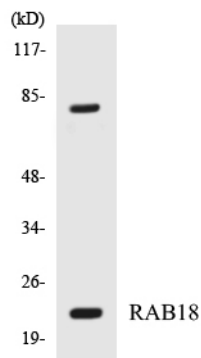
Research Area

Signaling Pathway; G Protein Signaling; Small G Proteins; Ras Family; Signal Transduction; Protein Trafficking; Vesicle Transport; Regulation

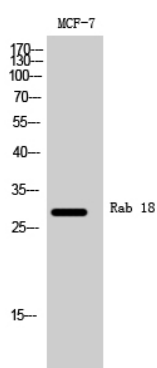
Image Data



Western blot analysis of lysates from MCF-7 and HUVEC cells, using RAB18 Antibody. The lane on the right is blocked with the synthesized peptide.



Western blot analysis of the lysates from HepG2 cells using RAB18 antibody.



Western Blot analysis of MCF-7 cells using Rab 18 Polyclonal Antibody

