

Product Name: PUMA Rabbit Polyclonal Antibody**Catalog #: APRab16691**

For research use only.

Summary

Description	Rabbit polyclonal Antibody
Host	Rabbit
Application	WB,ICC/IF,ELISA
Reactivity	Human,Mouse,Rat
Conjugation	Unconjugated
Modification	Unmodified
Isotype	IgG
Clonality	Polyclonal
Form	Liquid
Concentration	1mg/ml
Storage	Aliquot and store at -20°C (valid for 12 months). Avoid freeze/thaw cycles.
Shipping	Ice bags
Buffer	Liquid in PBS containing 50% glycerol, 0.5% protective protein and 0.02% New type preservative N.
Purification	Affinity purification

Application

Dilution Ratio	WB 1:500-1:2000,ICC/IF 1:100-1:300,ELISA 1:5000-1:20000
Molecular Weight	23kDa

Antigen Information

Gene Name	BBC3
Alternative Names	BBC3; PUMA; Bcl-2-binding component 3; JFY-1; p53 up-regulated modulator of apoptosis
Gene ID	27113.0
SwissProt ID	Q9BXH1
Immunogen	The antiserum was produced against synthesized peptide derived from human PUMA. AA range:120-169

Background

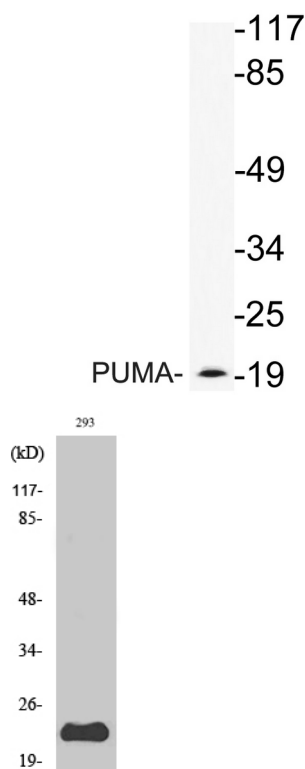
This gene encodes a member of the BCL-2 family of proteins. This family member belongs to the BH3-only pro-apoptotic

subclass. The protein cooperates with direct activator proteins to induce mitochondrial outer membrane permeabilization and apoptosis. It can bind to anti-apoptotic Bcl-2 family members to induce mitochondrial dysfunction and caspase activation. Because of its pro-apoptotic role, this gene is a potential drug target for cancer therapy and for tissue injury. Alternative splicing results in multiple transcript variants. [provided by RefSeq, Dec 2011],function:Essential mediator of p53-dependent and p53-independent apoptosis.,induction:By DNA damage, glucocorticoid treatment, growth factor deprivation and p53.,similarity:Belongs to the Bcl-2 family.,subcellular location:Localized to the mitochondria in order to induce cytochrome c release.,subunit:Interacts with MCL1 and BCL2A1 (By similarity). Interacts with BCL2 and BCL2L1/BCL-XL.,tissue specificity:Ubiquitously expressed.,

Research Area

p53;Huntington's disease;

Image Data



Western blot analysis of lysate from 293 cells treated with EGF, using PUMA antibody.

Western Blot analysis of various cells using PUMA Polyclonal Antibody