
Product Name: PTP22 Rabbit Polyclonal Antibody**Catalog #: APRab16667**

For research use only.

Summary

Description	Rabbit polyclonal Antibody
Host	Rabbit
Application	WB,IHC
Reactivity	Human,Mouse,Rat
Conjugation	Unconjugated
Modification	Unmodified
Isotype	IgG
Clonality	Polyclonal
Form	Liquid
Concentration	1mg/ml
Storage	Aliquot and store at -20°C (valid for 12 months). Avoid freeze/thaw cycles.
Shipping	Ice bags
Buffer	Liquid in PBS containing 50% glycerol, 0.5% protective protein and 0.02% New type preservative N.
Purification	Affinity purification

Application

Dilution Ratio	WB 1:500-1:2000,IHC 1:50-1:300
Molecular Weight	91kDa

Antigen Information

Gene Name	PTPN22
Alternative Names	PTPN22; PTPN8; Tyrosine-protein phosphatase non-receptor type 22; Hematopoietic cell protein-tyrosine phosphatase 70Z-PEP; Lymphoid phosphatase; LyP; PEST-domain phosphatase; PEP
Gene ID	26191.0
SwissProt ID	Q9Y2R2
Immunogen	Synthesized peptide derived from the N-terminal region of human PTP22.

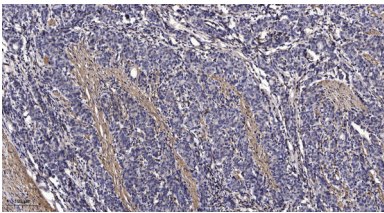
Background

This gene encodes of member of the non-receptor class 4 subfamily of the protein-tyrosine phosphatase family. The encoded protein is a lymphoid-specific intracellular phosphatase that associates with the molecular adapter protein CBL and may be involved in regulating CBL function in the T-cell receptor signaling pathway. Mutations in this gene may be associated with a range of autoimmune disorders including Type 1 Diabetes, rheumatoid arthritis, systemic lupus erythematosus and Graves' disease. Alternatively spliced transcript variants encoding distinct isoforms have been described. [provided by RefSeq, Mar 2009],catalytic activity:Protein tyrosine phosphate + H(2)O = protein tyrosine + phosphate.,function:Seems to act on Cbl. May play a role in regulating the function of Cbl and its associated protein kinases.,similarity:Belongs to the protein-tyrosine phosphatase family. Non-receptor class 4 subfamily.,similarity:Contains 1 tyrosine-protein phosphatase domain.,tissue specificity:Predominantly expressed in lymphoid tissues and cells. Isoform 1 is expressed in thymocytes and both mature B and T-cells,.

Research Area

MAPK

Image Data



Immunohistochemical analysis of paraffin-embedded human Gastric adenocarcinoma. 1, Antibody was diluted at 1:200 (4° overnight) . 2, Tris-EDTA,pH9.0 was used for antigen retrieval. 3,Secondary antibody was diluted at 1:200 (room temperature, 45min) .