

Product Name: PTN Rabbit Polyclonal Antibody**Catalog #: APRab16654**

For research use only.

Summary

Description	Rabbit polyclonal Antibody
Host	Rabbit
Application	WB,IHC,ICC/IF,ELISA
Reactivity	Human,Mouse,Rat
Conjugation	Unconjugated
Modification	Unmodified
Isotype	IgG
Clonality	Polyclonal
Form	Liquid
Concentration	1mg/ml
Storage	Aliquot and store at -20°C (valid for 12 months). Avoid freeze/thaw cycles.
Shipping	Ice bags
Buffer	Liquid in PBS containing 50% glycerol, 0.5% protective protein and 0.02% New type preservative N.
Purification	Affinity purification

Application

Dilution Ratio	WB 1:500-1:2000,IHC 1:100-1:300,ICC/IF 1:50-1:200,ELISA 1:10000-1:20000
Molecular Weight	19kDa

Antigen Information

Gene Name	PTN
Alternative Names	PTN; HBNF1; NEGF1; Pleiotrophin; PTN; Heparin-binding brain mitogen; HBBM; Heparin-binding growth factor 8; HBGF-8; Heparin-binding growth-associated molecule; HB-GAM; Heparin-binding neurite outgrowth-promoting factor 1; HBNF-1; Osteoblast-specific factor 1; OSF-1
Gene ID	5764.0
SwissProt ID	P21246
Immunogen	The antiserum was produced against synthesized peptide derived from the Internal region of human PTN. AA range:1-50

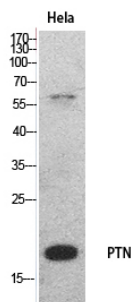
Background

function:Heparin binding mitogenic protein. Has neurite extension activity.,induction:By heparin and retinoic acid.,online information:Pleiotrophin entry,similarity:Belongs to the pleiotrophin family.,tissue specificity:Osteoblast and brain.,function:Heparin binding mitogenic protein. Has neurite extension activity.,induction:By heparin and retinoic acid.,online information:Pleiotrophin entry,similarity:Belongs to the pleiotrophin family.,tissue specificity:Osteoblast and brain.,

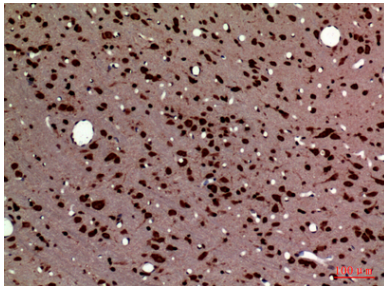
Research Area

Neuroscience; Neurology process; Growth and Development; Neurotrophins; Immunology; Innate Immunity; Cytokines; Signal Transduction; Cytoskeleton / ECM; Extracellular Matrix; Structures; Bone; Cancer; Growth factors; Hormones

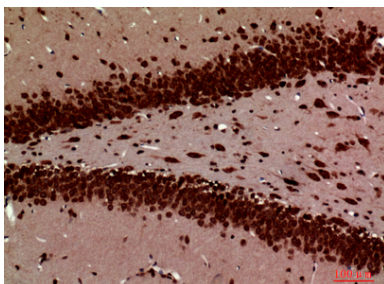
Image Data



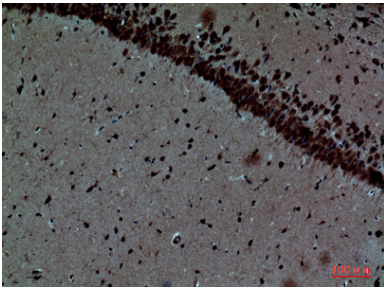
Western Blot analysis of HeLa cells using PTN Polyclonal Antibody.. Secondary antibody was diluted at 1:20000



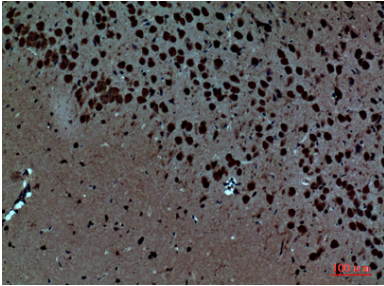
Immunohistochemical analysis of paraffin-embedded rat-brain, antibody was diluted at 1:100



Immunohistochemical analysis of paraffin-embedded rat-brain, antibody was diluted at 1:100



Immunohistochemical analysis of paraffin-embedded mouse-brain, antibody was diluted at 1:100



Immunohistochemical analysis of paraffin-embedded mouse-brain, antibody was diluted at 1:100