
Product Name: PSG3 Rabbit Polyclonal Antibody**Catalog #: APRab16599**

For research use only.

Summary

Description	Rabbit polyclonal Antibody
Host	Rabbit
Application	IHC, ICC/IF, ELISA
Reactivity	Human, Rat, Mouse
Conjugation	Unconjugated
Modification	Unmodified
Isotype	IgG
Clonality	Polyclonal
Form	Liquid
Concentration	1mg/ml
Storage	Aliquot and store at -20°C (valid for 12 months). Avoid freeze/thaw cycles.
Shipping	Ice bags
Buffer	Liquid in PBS containing 50% glycerol, 0.5% protective protein and 0.02% New type preservative N.
Purification	Affinity purification

Application

Dilution Ratio IHC 1:100-1:300, ICC/IF 1:50-1:200, ELISA 1:10000-1:20000

Molecular Weight

Antigen Information

Gene Name	PSG3
Alternative Names	PSG3; Pregnancy-specific beta-1-glycoprotein 3; PS-beta-G-3; PSBG-3; Pregnancy-specific glycoprotein 3; Carcinoembryonic antigen SG5
Gene ID	5671.0
SwissProt ID	Q16557
Immunogen	Synthesized peptide derived from the Internal region of human PSG3.

Background

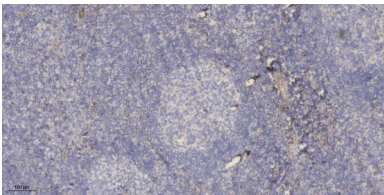
The human pregnancy-specific glycoproteins (PSGs) are a family of proteins that are synthesized in large amounts by placental

trophoblasts and released into the maternal circulation during pregnancy. Molecular cloning and analysis of several PSG genes has indicated that the PSGs form a subgroup of the carcinoembryonic antigen (CEA) gene family, which belongs to the immunoglobulin superfamily of genes. Members of the CEA family consist of a single N domain, with structural similarity to the immunoglobulin variable domains, followed by a variable number of immunoglobulin constant-like A and/or B domains. Most PSGs have an arg-gly-asp (RGD) motif, which has been shown to function as an adhesion recognition signal for several integrins, in the N-terminal domain (summary by Teglund et al., 1994 [PubMed 7851896]). For additional general information about the PSG gene family, see PSG1 (MIMdevelopmental stage:PSBG are produced in high quantity during pregnancy.,similarity:Belongs to the immunoglobulin superfamily. CEA family.,similarity:Contains 1 Ig-like V-type (immunoglobulin-like) domain.,similarity:Contains 3 Ig-like C2-type (immunoglobulin-like) domains.,

Research Area

Tags & Cell Markers; Cell Type Markers; Other Cell Types; Developmental Biology; Reproduction; Placental development

Image Data



Immunohistochemical analysis of paraffin-embedded human tonsil. 1, Antibody was diluted at 1:200 (4° overnight) . 2, Tris-EDTA,pH9.0 was used for antigen retrieval. 3,Secondary antibody was diluted at 1:200 (room temperature, 30min) .