

Product Name: PRPH Rabbit Polyclonal Antibody**Catalog #: APRab16553**

For research use only.

Summary

Description	Rabbit polyclonal Antibody
Host	Rabbit
Application	WB,IHC,ICC/IF,ELISA
Reactivity	Human,Rat
Conjugation	Unconjugated
Modification	Unmodified
Isotype	IgG
Clonality	Polyclonal
Form	Liquid
Concentration	1mg/ml
Storage	Aliquot and store at -20°C (valid for 12 months). Avoid freeze/thaw cycles.
Shipping	Ice bags
Buffer	Liquid in PBS containing 50% glycerol, 0.5% protective protein and 0.02% New type preservative N.
Purification	Affinity purification

Application

Dilution Ratio	WB 1:500-1:2000,IHC 1:100-1:300,ICC/IF 1:50-1:200,ELISA 1:10000-1:20000
Molecular Weight	55kDa

Antigen Information

Gene Name	PRPH
Alternative Names	PRPH; NEF4; PRPH1; Peripherin; Neurofilament 4
Gene ID	5630.0
SwissProt ID	P41219
Immunogen	The antiserum was produced against synthesized peptide derived from human Peripherin. AA range:421-470

Background

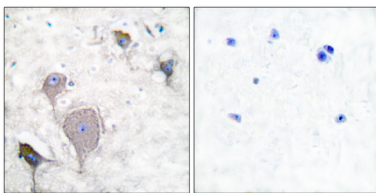
This gene encodes a cytoskeletal protein found in neurons of the peripheral nervous system. The encoded protein is a type III

intermediate filament protein with homology to other cytoskeletal proteins such as desmin, and is a different protein that the peripherin found in photoreceptors. Mutations in this gene have been associated with susceptibility to amyotrophic lateral sclerosis. [provided by RefSeq, Jul 2008],function:Class-III neuronal intermediate filament protein.,online information:Peripherin entry,similarity:Belongs to the intermediate filament family,.

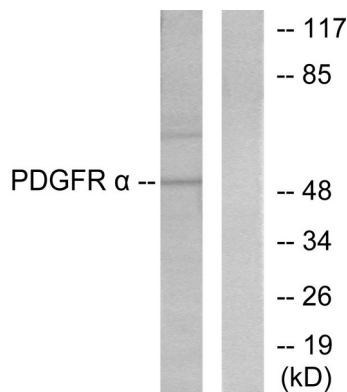
Research Area

Amyotrophic lateral sclerosis (ALS);

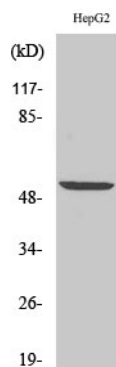
Image Data



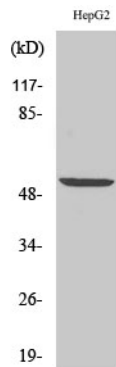
Immunohistochemistry analysis of paraffin-embedded human brain tissue, using Peripherin Antibody. The picture on the right is blocked with the synthesized peptide.



Western blot analysis of lysates from HepG2 cells, using Peripherin Antibody. The lane on the right is blocked with the synthesized peptide.



Western Blot analysis of various cells using PRPH Polyclonal Antibody diluted at 1:1000



Western Blot analysis of HepG2 cells using PRPH Polyclonal Antibody diluted at 1:1000